

DOKUMEN NEGARA

SANGAT RAHASIA



3

Bahasa Inggris SMA/MA IPA

Nama :	
No Peserta :	

Listening Section

In this section of the test, you will have the chance to show how well you understand spoken English. There are four parts to this section with special direction for each part.

PART I**Questions 1 to 4.****Directions:**

In this part of the test, you will hear some dialogues and questions spoken in English. The dialogues and the questions will be spoken twice. They will not be printed in your test book, so you must listen carefully to understand what the speakers are saying.

After you listen to the dialogue and the question about it, read the five possible answers, and decide which one would be the best answer to the question you have heard. Now listen to a sample question.

You will hear:

Man : I give up! I'll stop learning French.

Woman : Why do you say that? You are making a lot of progress.

Man : No, I'm not. I've tried hard but still I cannot speak it well.

Woman : How come? You can speak Arabic, Hindi, Japanese and even Russian well, can't you?

Narrator : What language is difficult for the man to learn?

- A. Hindi.
- B. Arabic.
- C. French.
- D. Russian.
- E. Japanese.

The best answer to this question is "French". Therefore you should choose answer (C).

1.
 - A. Job vacancy.
 - B. Job interview.
 - C. Printing company.
 - D. Getting high salary.
 - E. Finding a job.

2.
 - A. A novel.
 - B. A comic.
 - C. A magazine.
 - D. A science book.
 - E. An English Grammar Book.

DOKUMEN NEGARA

SANGAT RAHASIA



4

Bahasa Inggris SMA/MA IPA

3. A. The exam is easy.
 B. This time will not fly.
 C. The exam is in three weeks.
 D. He knows many things about the exam.
 E. He still has three days for the exam preparation.
4. A. She came to Nisa's party.
 B. She couldn't make a party.
 C. She had to go to a doctor.
 D. She invited the man to a party.
 E. She didn't go to Nisa's party.

PART II**Questions: 5 to 7.****Directions:**

In this part of the test, you will hear some incomplete dialogues spoken in English, followed by four responses, also spoken in English. The dialogues and the responses will be spoken twice. They will not be printed in your test book, so you must listen carefully to understand what the speakers are saying. You have to choose the best response to each question.

Now listen to a sample question.

Man : Hey, Cindy could you do me a favour?

Woman : What can I do for you?

Man : Would you mind going to the post office to send my letter?

Woman :

Narrator : What is the woman's possible response?

A. I am all out. Sorry.

B. I love to write letters.

C. Sure, by all means.

D. It's next to the police station.

Narrator : The best answer to the question is: "Sure, by all means." Therefore you should choose answer (C).

5. Mark your answer on your answer sheet.
6. Mark your answer on your answer sheet.
7. Mark your answer on your answer sheet.

DOKUMEN NEGARA

SANGAT RAHASIA

5



Bahasa Inggris SMA/MA IPA

PART III

Questions 8 to 11.

Directions:

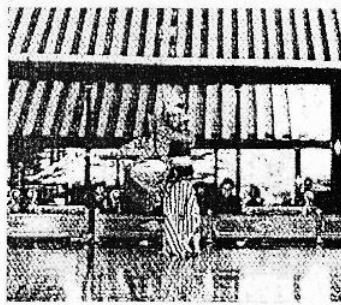
In this part of the test, you will hear some dialogues or monologues spoken in English. The dialogues or monologues will be spoken twice. They will not be printed in your test book, so you must listen carefully to understand what the speakers are saying. After you listen to the dialogue or monologue, look at the five pictures provided in your test book, and decide which would be the most suitable one with the dialogue or monologue you have heard.

8.

A.



B.



C.



D.



E.



9.

A.



B.



C.



D.



E.



DOKUMEN NEGARA

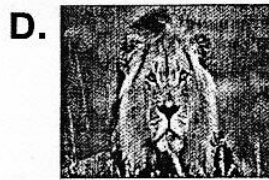
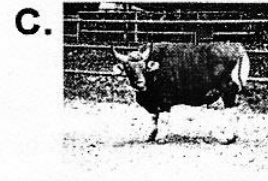
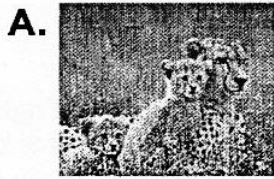
SANGAT RAHASIA

6

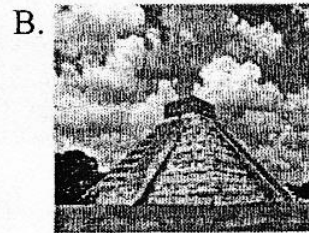
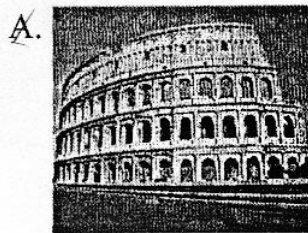


Bahasa Inggris SMA/MA IPA

10.



11.

**PART IV****Questions 12 to 15.****Directions:**

In this part of the test, you will hear several monologues. Each monologue will be spoken twice. They will not be printed in your test book, so you must listen carefully to understand what the speakers are saying.

After you hear the monologue and the question about it, read the five possible answers and decide which one would be the best answer to the question you have heard.

Questions 12 and 13 are based on the following monologue.

12. A. Paris.
 B. The Louvre.
 C. Notre Dame
 D. The crowded city.
 E. The City of Light.

DOKUMEN NEGARA

SANGAT RAHASIA



7

Bahasa Inggris SMA/MA IPA

13. A. The Louvre.
B. The Cathedral.
C. The Eiffel Tower.
D. The lovely garden.
E. The light structure.

Questions 14 and 15 are based on the following monologue.

14. A. Other beasts.
B. The water.
C. The frogs.
D. A lake.
E. A horse.
15. A. They ate an animal.
B. They lived in a lake.
C. They saw wild horses.
D. They went somewhere.
E. They jumped into water.

This is the end of the listening section

DOKUMEN NEGARA

SANGAT RAHASIA

8



Bahasa Inggris SMA/MA IPA

The following text is for questions 16 and 17

Dear Mr. Budi Santoso
Sales Manager
Sindang Maju Ltd.

I am writing to inform you of my resignation from the position of sales executive. My last day of work will be March 10, 2013. I have signed an employment contract with another company. I would like to express my appreciation for your excellent leadership in the company. I have learned a lot about direct selling. These skills will be valuable in my future career. I have been fortunate to be employed by Sindang Maju. I have learned that putting customer first is important in today's competitive environment. I will do my best to finish my project before my leaving.

Sincerely,

Nadia Utami
Sales Executive

16. Nadia will quit working at Sindang Maju because she
- A. has been offered a position in another company
 - B. has signed a contract with another company
 - C. is disappointed with Sindang Maju
 - D. wants to have a better career
 - E. wants a better payment
17. From Nadia's letter, we know that she
- A. promises to finish her project before leaving Sindang Maju
 - B. is promoted to another position in the same company
 - C. is fired from her current position and seeks another job
 - D. quits the job at Sindang Maju to pursue higher salary
 - E. continues working at Sindang Maju as an assistant

DOKUMEN NEGARA

SANGAT RAHASIA

9

**Bahasa Inggris SMA/MA IPA**

The following text is for questions 18 and 19

Hotel Work :**One Month Training Course**

Suitable young men and women are invited to apply for places on the one month training course on hotel work organized by the Hong Kong Institute of Hotel Management. Tuition is free of charge and students who successfully complete the course will be offered employment in the Colony's leading hotels.

The Training Course will take place from Monday 21st July to Friday 22nd August, from 9 a.m. to 4.30 p.m. daily, except Saturdays and Sundays.

Applications for places on the course are welcome for students now in their third year at secondary school, who have good knowledge of English, and have interest in hotel work.

Application forms may be obtained from:

The Hong Kong Institute of Management,
Box 948,
The South China Times.

The closing date for applications is April 29th

18. Those who successfully complete the course will be given
- A. free tuition
 - B. a further training course
 - C. jobs in big hotels in the colony
 - D. a chance to stay in the colony's leading hotels for one month
 - E. membership of the Hong Kong Institute of Hotel management
19. What requirement is needed by an applicant to apply for the hotel work training?
- A. Able to speak Mandarin.
 - B. Secondary school graduate.
 - C. Good knowledge of English.
 - D. Reputable university graduate.
 - E. 2-year experience in hotel work.

DOKUMEN NEGARA

SANGAT RAHASIA

10

**Bahasa Inggris SMA/MA IPA****The following text is for questions 20 to 22.****Rafael Nadal pull out of London Olympics**

Associated Press | Thu, 07/19/2012 10:00 PM | Sports

Rafael Nadal has pulled out of the London Olympics, saying he is not in condition to compete.

Nadal said in a statement Thursday it is one of the saddest moment of his career and that he will not travel with the Spanish delegation to London. He was set to be the flag bearer for Spain during the opening ceremony.

Nadal won gold in Beijing in 2008. He has not played since he was eliminated in the second round of Wimbledon by 100th-ranked Lukas Rosol.

20. Rafael Nadal has pulled out of London Olympics because he
- is not fit enough to compete
 - will not be with the Spanish delegation
 - has just been from the Beijing Olympics
 - did not want to be the flag bearer for Spain
 - was eliminated in the 2nd round of Wimbledon
21. In Wimbledon, Rafael Nadal
- was to be the flag bearer for Spain
 - was injured during the Wimbledon match
 - beat the world's 100th ranked Lukas Rosol
 - defeated the world's 100th ranked Lukas Rosol
 - was eliminated by the world's 100th ranked Lukas Rosol
22. Paragraph 1 tells us that Rafael Nadal decides to
- leave London soon
 - leave the Olympics
 - compete in the Olympics
 - play in the London Olympics
 - cancel his participation in the Olympics

DOKUMEN NEGARA

SANGAT RAHASIA

11



Bahasa Inggris SMA/MA IPA

The following text is for questions 23 to 25.

BRITAIN: They have a show. They have a social networking. Now comes, Wikileaks - the album. Wikileaks is branching out into the entertainment industry, announcing a "Beat the Blockade" CD intended to raise money to keep the online transparency advocates afloat.

The group said in a statement late Thursday that the CD would feature 12 songs including "Where There Are No Secret," "The Ballad of Julian Assange," and "B Manning".

It's the latest attack outside the secret-busting business for Wikileaks, which has spawned a TV show called "The World Tomorrow" and started its own social network, called Friends of Wikileaks.

Wikileaks chief Julian Assange says his website, which once featured an anonymous electronic drop box for secret document, has been effectively mothballed by a US financial blockade. - AP

23. What is the text about?
- A. A website name Wikileaks.
 - B. A TV show called "The World Tomorrow".
 - C. Wikileaks' CD entitled "Beat the Blockade".
 - D. Wikileaks' anonymous electronic drop box.
 - E. The secret-busting business for Wikileaks.
24. What is meant by the latest attack outside the secret-busting business for Wikileaks?
- A. The website business of Wikileaks.
 - B. The TV show called "The World Tomorrow".
 - C. The social network called Friends of Wikileaks.
 - D. The music CD called "Beat the Blockade".
 - E. The electronic box for secret documents.
25. "... once featured an anonymous electronic drop box ..." (paragraph 4).
The underlined word is closest in meaning to
- A. identified
 - B. recognized
 - C. nameless
 - D. mysterious
 - E. strange

DOKUMEN NEGARA

SANGAT RAHASIA

12

**Bahasa Inggris SMA/MA IPA****The text below is for questions 26 to 28****The Near- Death Story of Mellen-Thomas Benedict**

In 1982, I died from terminal cancer. My condition was non-operable. I chose not to have chemotherapy. I was given six to eight months to live. Before this time, I had become increasingly despondent over the nuclear crisis, the ecology crisis, and so forth. I came to believe that nature had made a mistake—that we were probably a cancerous organism on the planet. And that is what eventually killed me.

Before my near-death experience, I tried all sort of alternative healing methods. None helped. So I determined that this was between me and God. I had never really considered God. Neither was I into any kind of spirituality and alternative healing. I read various religions and philosophies. They gave hope that there was something on the other side.

I had no medical insurance, so my life savings went overnight on tests. Unwilling to drag my family into this, I determined to handle this myself. I ended up in hospice care and was blessed with an angel for my hospice caretaker, whom I will call "Anne." She stayed with me through all that was to follow.

26. According to Mellen-Thomas Benedict, what is the reason for many people to die of cancer?
- The nuclear and ecology crises.
 - All sorts of alternative healing methods.
 - They do not believe in the existence of God.
 - Chemotherapy is too expensive for most people.
 - The nature's mistake to make the human being a cancerous organism.
27. We know from the story that Mellen-Thomas Benedict believed that he eventually died
- because God decided so
 - because he was not operated
 - because he did not have chemotherapy
 - because of the alternative healing methods
 - because he did not have any medical insurance
28. Why did he choose to stay in a hospice care?
- They will take care of his health problem.
 - He had to do the medical checks there.
 - Anne asked him to stay there.
 - His family told him so.
 - He was broke.

DOKUMEN NEGARA

SANGAT RAHASIA

13

**Bahasa Inggris SMA/MA IPA****The following text is for questions 29 to 32**

Tornados occur when the conditions that cause thunderstorms are unusually violent. Winds blow in opposite directions around a strong updraft start a narrow, violent whirl. Centrifugal force effectively throws the air away from the center, leaving a core of very low pressure. This is much like stirring water in a cup, thus forming a vortex-like dip in the surface.

This low-pressure core acts as a partial vacuum, sometimes helping to lift the roofs off houses. Most of the damage, though, results from the force of the wind itself. Around the edges of the whirl, wind speeds may reach 300 miles (480 kilometers) per hour. At first, the tornado's funnel is whitish-gray because it is composed of minute water droplets formed as the air in the funnel expands and cools. After touching down, the funnel becomes dark because of all of the debris it has picked up. This debris can include soil, tree limbs, and parts of buildings; tornados have been known to pick up automobiles, horses, and whole trees.

A tornado usually moves toward the east (or often northeast in the Northern Hemisphere and southeast Hemisphere) at 25 to 40 miles (40 to 65 kilometers) per hour. Fortunately, most tornados are less than half a mile (800 meters) wide; the edge of one may destroy all of the houses on one side of a street while leaving those on the other side completely undamaged.

Deaths from tornados in the United States averaged roughly 100 per year over the last century. However, they have dropped somewhat in recent decades as better forecasting and warning systems have been implemented

29. Why have deaths from Tornado in the United States decreased in the recent decades?
- A. Most tornados are less than half a mile wide.
 - B. There are no more tornados in the United States.
 - C. There are better forecasting and warning systems.
 - D. The tornado left the United States completely undamaged.
 - E. The people are evacuated by the United States government.
30. Why is tornado's funnel dark as soon as it touches the ground?
- A. It contains water droplets.
 - B. The temperature is changed.
 - C. It contains building materials.
 - D. It whirls in high speed.
 - E. It has picked up debris.
31. What are the impacts of Tornado?
- A. Water dropping.
 - B. Heavy disasters.
 - C. Whirl of winds.
 - D. Wind blowing.
 - E. Grey and dark sky.

DOKUMEN NEGARA

SANGAT RAHASIA



14

Bahasa Inggris SMA/MA IPA

32. "While leaving those on the other side completely undamaged." (Paragraph 3)

The underlined word has similar meaning with

- A. damaged
- B. vanish
- C. wounded
- D. safe
- E. gone

The following text is for questions 33 to 35

Faster planes and cheaper flights are making it easier than ever before for people to travel. In the most 'developed' societies, visiting exotic places is a sought-after status symbol. The tourism industries of both developed and developing countries have recognised this fact and are learning to take advantage of it.

There are, however, some problems associated with this new industry. Firstly, there is the increasing crime rate. Some locals see tourists as an easy prey because, not only are they in unfamiliar territory and therefore less able to take care of themselves, but also they carry visible items of wealth, such as cameras and jewelery which can be disposed of quickly for profit.

Another major problem is health. With greater mobility comes greater danger of spreading contagious diseases around the world. One carrier returning home could easily start an epidemic before their illness was diagnosed. Moreover, the emergence of many diseases which resist antibiotics is causing scientists to be increasingly concerned about this issue.

Also to be considered is the natural environment, which can be seriously threatened by too many visitors. Australia's Great Barrier Reef, for example, is in danger of being destroyed by tourists and there are plans to restrict visitors to some of the more delicate coral cays

These are just three of the reasons why any country should be wary of committing itself to an extensive tourism development program.

33. Why does the natural environment become one of the serious problem associated with the faster planes and cheaper flight? Because
- A. it easily started an epidemic before their illness was diagnosed
 - B. it can be destroyed by too many visitors
 - C. the health problem will increase
 - D. they carry visible items of wealth
 - E. it can increase crime rate
34. Why is the crime rate increasing due to the new industry?
- A. Some tourists carry visible items of wealth.
 - B. The tourists are spreading contagious diseases.
 - C. The government is planning to restrict visitors to some coral cays.
 - D. The new industry makes the number of unemployment increase.
 - E. The tourists come by plane.

DOKUMEN NEGARA

SANGAT RAHASIA

15

**Bahasa Inggris SMA/MA IPA**

35. "One carrier returning home could easily start an epidemic before their illness was diagnosed." (Paragraph 3)
The underlined word means
- A. found
 - B. observed
 - C. identified
 - D. examined
 - E. healed

The following text is for questions 36 to 38.

In the sequel of 'Sherlock Holmes' this time, Professor James Moriarty (Jared Harris) is the most dangerous enemy. Moriarty is not the kind of person who is hesitant to remove the lives of many people in order to achieve his goals. Explosions in Strassbourg are one of the results of Prof. Moriarty's creation.

Holmes was nosy when his friend, Dr. Watson (Jude Law) was getting married, because the marriage would automatically make Holmes lose his partner in investigating the case.

A gypsy woman, Madam Sinza Heron (Naomi Rapace), helped Holmes the adventure this time. There was also the Holmes brother, Mycroft Holmes (Stephen Fry) who came to be an accomplice of the detective this time.

Arguably, the visual effect of 'A Game of Shadow' is more stable than its predecessor. A few slow-movement scenes later find in the cease-fire. Colors are displayed also feels right.

Farce as those made by Holmes and several other characters in the film guaranteed to invite laughter. The chemistry between Robert Downey Jr. and Jude Law is not be doubted anymore. Since in the first film, the two men were able to captivate the audience and not be missed.

Chess compete between Holmes and Prof. Moriarty became the ultimate point. They both described the mind wanders respectively. Do you intrigued with the acting of the detective? The film 'Sherlock Holmes: A Game of Shadow' can be an alternative entertainment at this weekend.

36. The chemistry between Robert Downey Jr. and Jude Law isn't be doubted because
- A. the tow men have captivated the audience in the first film
 - B. the chemistry is formed through their friendship in real life
 - C. farce made by the two men guaranteed to invite laughter
 - D. the two men are partner in investigating some cases
 - E. the two men described the mind wanders
37. What did the movie director do to invite laughter in his film?
- A. He hired the clowns.
 - B. He showed the cartoons
 - C. He acted like comedians.
 - D. He made jokes within the scene.
 - E. He forced the actors to be funny.

DOKUMEN NEGARA

SANGAT RAHASIA

16

**Bahasa Inggris SMA/MA IPA**

38. What can we conclude of "A Game of Shadow"?
- A. The chess competition showed mind wanders.
 - B. The visual effect of the movie is testable.
 - C. The movie is terribly out of standard.
 - D. The actors did not perform well.
 - E. The movie is worth watching.

The following text is for questions 39 to 41.

Internet has been the most outstanding innovation in the history of mankind. As with every single innovation, the internet has its own advantages and disadvantages.

The target of the internet has always been the communication. By the beginning of computer's internet, our earth has reduced and has attained the form of a global village. Now we can communicate in a fraction of second with a person who is sitting in the other parts of the world. Today, for better communication, we can avail the facilities of e-mail and we can chat for hours with our loved ones. There are plenty messenger services in offering. With the help of such services, it has become very easy to establish a kind of global friendship.

However, the internet also has disadvantages. One of them is the wide spread of unsuitable contents for kids. It is a very serious issue and related to children's healthy mental life. There are thousands of such inappropriate contents on the internet which can be easily found. Though, the internet can also create havoc, destruction and its misuse can be very fatal, the advantages of it out-weigh its disadvantages.

39. What is one of the advantages of internet?
- A. To create the misuse of time.
 - B. To easily find inappropriate person.
 - C. To chat with love ones only.
 - D. To connect people in the other part of the world.
 - E. To spread issues related to children healthy mental life.
40. What is the main idea of paragraph 2?
- A. The internet could create havoc and destruction.
 - B. The internet could facilitate communication.
 - C. The internet has more advantages than disadvantages.
 - D. Many modern devices can be connected to the internet.
 - E. The internet has become the most noticeable innovation.
41. All in all, the writer believes that the internet is
- A. very harmful
 - B. inappropriate
 - C. very useful
 - D. destructive
 - E. cheap

DOKUMEN NEGARA

SANGAT RAHASIA

17

**Bahasa Inggris SMA/MA IPA**

The following text is for questions 42 to 44.

Many people imagine the sea-horse to be real horse living in the sea. This is not true at all. The sea - horse is so called because it is a tiny creature with a horse-liked head which lives in the sea. Sea-horse are found mostly in warm seas.

They have a long, flexible tail which is used for wrapping around weeds for support. They swim upright position, their movements being helped by a rapidly oscillating fin on their back. The male sea-horse lays her eggs in this pouch.

The most remarkable thing about the sea-horse is that part of the process of reproduction is taken over by the male creature. Once the female sea-horse has laid her eggs in the male creature's pouch, she leaves. The hatching of the egg is done by the male fish. Mating begins with the male and the female sea-horses doing courtship dance. The male and female creatures swim around each other in circles.

At the end of the dance, the male appears to bow to its partner; but actually, the male is banding to pump water from his pouch. Next, the female fish lays eggs into the male's pouch. About two hundred eggs are laid. The pouch, then close up. The female sea- horse now swims away, leaving the male sea-horse to do hatching.

The eggs are hatched about a month later. The young sea-horses are ejected from the male creature's pouch by means of muscular contractions.

42. How does the sea-horse swing its fin?
- A. With its back.
 - B. With its position.
 - C. With its flexible tail.
 - D. With a slow manner.
 - E. With a fast movement.
43. What makes sea-horse remarkable?
- A. Its size.
 - B. Its reproduction process.
 - C. Its shape.
 - D. Its respiratory process.
 - E. Its rapid movement.
44. We know from the text that
- A. sea horse eat weeds for their food
 - B. the male sea-horse do the hatching
 - C. sea-horse is called because it is a tiny horse
 - D. the female sea-horse keeps her eggs in her pouch
 - E. the female sea-horse doesn't eat fish during pregnancy

DOKUMEN NEGARA

SANGAT RAHASIA

18



Bahasa Inggris SMA/MA IPA

The following text is for questions 45 and 46

PT SUMI INDO KABEL Tbk.
(“The Company”)
ANNOUNCEMENT
TO ALL THE SHAREHOLDERS

This is to inform the shareholders of PT. SUMI INDO KABEL Tbk. (“Company”) that the Annual General meeting of shareholders (“meeting”) shall be held on Monday September 10, 2012

The invitation for the meeting shall be announced on Thursday, August 9, 2012 in (two) newspapers.

Those who are entitled to attend or wish to be represented at the meeting by proxies and eligible to vote at the meeting are shareholders whose names are recorded in the Company’s register of shareholders on Wednesday, August 8, 2012 at 4 p.m..

Shareholders who will submit their proposal to the agenda of meeting in accordance with the Company’s Articles of Association must send it to the Directors at the latest 7 (seven) days before invitation of meeting.

Tangerang, July 25, 2012

PT. SUMI INDO KABEL Tbk
Director

45. The invitation will be announced on ...
- A. July 25, 2012
 - B. August 2, 2012
 - C. August 9, 2012
 - D. August 8, 2012
 - E. September 10, 2012
46. According to the text, the shareholders should
- A. send their proposal a week before the invitation of the meeting
 - B. announce the invitation for the meeting on Thursday
 - C. make a proposal during the meeting and represent it
 - D. receive an invitation and a proposal from the Directors
 - E. inform the invitation to the other shareholders

DOKUMEN NEGARA

SANGAT RAHASIA

19

**Bahasa Inggris SMA/MA IPA**

47. Arrange these sentences below into a good paragraph.

HOW TO TIE A NECK TIE

1. First of all, start with the wide end on your right.
2. Secondly, cross the wide end over the narrow, and back underneath.
3. Then bring the wide end up through the loop
4. Finally, pull the wide end through the knot in front. Tighten and draw up to collar
5. Then, bring the wide end up, and turn down through the loop
6. After that, pass the wide end around to the front from your left to right

- A. 1 - 2 - 6 - 5 - 3 - 4
- B. 1 - 2 - 3 - 4 - 5 - 6
- C. 1 - 2 - 3 - 5 - 4 - 6
- D. 1 - 2 - 5 - 3 - 6 - 4
- E. 1 - 2 - 5 - 6 - 3 - 4

Questions 48 to 50: complete the following text with the words provided.

The Man and The Monster

Once upon a time there lived a young man, named Nazar. He lived a very poor life. One day, Nazar went to town to look for a job. He had to climb up the hill and (48) ... a thick jungle to get to a nearest town. Suddenly, he heard (49) ... from a bush. When he approached, he found some people gathering around a big tree. Nazar realized that the people were doing against God order. Then he took out a big (50)... axe and planned to cut down the tree.

48.
- A. checked
 - B. examined
 - C. inspected
 - D. went through
 - E. hunted through
49.
- A. trembles
 - B. shadows
 - C. movement
 - D. gestures
 - E. sounds
50.
- A. sharp
 - B. edge
 - C. dull
 - D. rough
 - E. thick