

DOKUMEN NEGARA

SANGAT RAHASIA



3

## Bahasa Inggris SMA/MA IPA

Nama :	
No Peserta :	

**Listening Section**

In this section of the test, you will have the chance to show how well you understand spoken English. There are four parts to this section with special direction for each part.

**PART I****Questions 1 to 4.****Directions:**

In this part of the test, you will hear some dialogues and questions spoken in English. The dialogues and the questions will be spoken twice. They will not be printed in your test book, so you must listen carefully to understand what the speakers are saying.

After you listen to the dialogue and the question about it, read the five possible answers, and decide which one would be the best answer to the question you have heard. Now listen to a sample question.

You will hear:

Man : I give up! I'll stop learning French.

Woman : Why do you say that? You are making a lot of progress.

Man : No, I'm not. I've tried hard but still I cannot speak it well.

Woman : How come? You can speak Arabic, Hindi, Japanese and even Russian well, can't you?

Narrator : What language is difficult for the man to learn?

- A. Hindi.
- B. Arabic.
- C. French.
- D. Russian.
- E. Japanese.

The best answer to this question is "French". Therefore you should choose answer (C).

1.
  - A. Job vacancy.
  - B. Job interview.
  - C. Printing company.
  - D. Getting high salary.
  - E. Finding a job.
  
2.
  - A. A novel.
  - B. A comic.
  - C. A magazine.
  - D. A science book.
  - E. An English Grammar Book.

DOKUMEN NEGARA

SANGAT RAHASIA



4

**Bahasa Inggris SMA/MA IPA**

3.       A. The exam is easy.  
          B. This time will not fly.  
          C. The exam is in three weeks.  
          D. He knows many things about the exam.  
          E. He still has three days for the exam preparation.
4.       A. She came to Nisa's party.  
          B. She couldn't make a party.  
          C. She had to go to a doctor.  
          D. She invited the man to a party.  
          E. She didn't go to Nisa's party.

**PART II****Questions: 5 to 7.****Directions:**

In this part of the test, you will hear some incomplete dialogues spoken in English, followed by four responses, also spoken in English. The dialogues and the responses will be spoken twice. They will not be printed in your test book, so you must listen carefully to understand what the speakers are saying. You have to choose the best response to each question.

Now listen to a sample question.

Man       : Hey, Cindy could you do me a favour?

Woman     : What can I do for you?

Man       : Would you mind going to the post office to send my letter?

Woman     : ....

Narrator   : What is the woman's possible response?

A. I am all out. Sorry.

B. I love to write letters.

C. Sure, by all means.

D. It's next to the police station.

Narrator   : The best answer to the question is: "Sure, by all means." Therefore you should choose answer (C).

5.   Mark your answer on your answer sheet.  
6.   Mark your answer on your answer sheet.  
7.   Mark your answer on your answer sheet.

DOKUMEN NEGARA

SANGAT RAHASIA

5



## Bahasa Inggris SMA/MA IPA

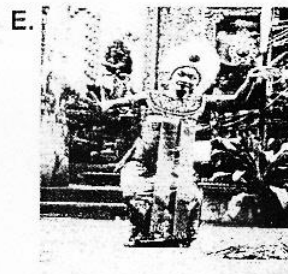
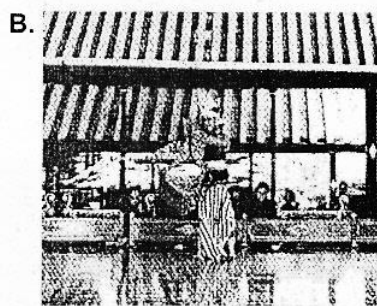
## PART III

## Questions 8 to 11.

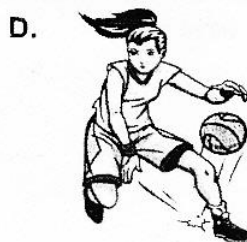
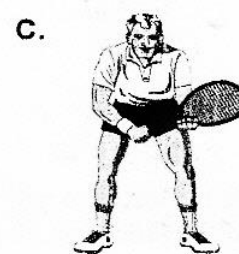
## Directions:

In this part of the test, you will hear some dialogues or monologues spoken in English. The dialogues or monologues will be spoken twice. They will not be printed in your test book, so you must listen carefully to understand what the speakers are saying. After you listen to the dialogue or monologue, look at the five pictures provided in your test book, and decide which would be the most suitable one with the dialogue or monologue you have heard.

8.



9.



DOKUMEN NEGARA

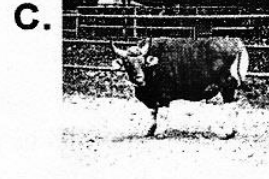
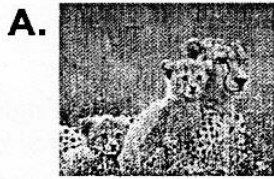
SANGAT RAHASIA

6

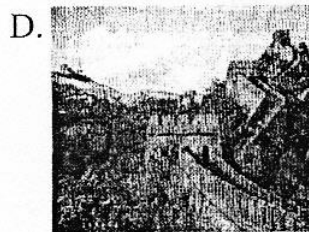
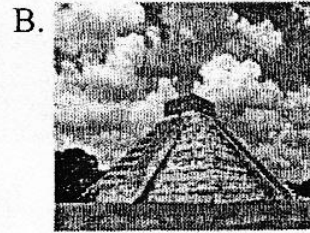
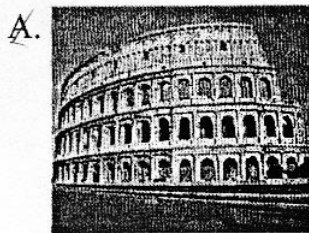


Bahasa Inggris SMA/MA IPA

10.



11.

**PART IV****Questions 12 to 15.****Directions:**

In this part of the test, you will hear several monologues. Each monologue will be spoken twice. They will not be printed in your test book, so you must listen carefully to understand what the speakers are saying.

After you hear the monologue and the question about it, read the five possible answers and decide which one would be the best answer to the question you have heard.

**Questions 12 and 13 are based on the following monologue.**

12. A. Paris.  
B. The Louvre.  
C. Notre Dame  
D. The crowded city.  
E. The City of Light.

DOKUMEN NEGARA

SANGAT RAHASIA



7

**Bahasa Inggris SMA/MA IPA**

13. A. The Louvre.  
B. The Cathedral.  
C. The Eiffel Tower.  
D. The lovely garden.  
E. The light structure.

**Questions 14 and 15 are based on the following monologue.**

14. A. Other beasts.  
B. The water.  
C. The frogs.  
D. A lake.  
E. A horse.
15. A. They ate an animal.  
B. They lived in a lake.  
C. They saw wild horses.  
D. They went somewhere.  
E. They jumped into water.

**This is the end of the listening section**

DOKUMEN NEGARA

SANGAT RAHASIA

8



## Bahasa Inggris SMA/MA IPA

The following text is for questions 16 and 17

Yogyakarta, December 12<sup>th</sup>, 2012

University of Cambridge International Examination  
Cambridge Assessment DC 10  
Hill Farm Road  
Whittlesford  
Cambridge CB2 4FZ, England

Dear Sir/Madam,

I would like to apologize for sending the Forecast Grade form of our CIE candidates very late. I have overlooked the deadline to send this form. I had been so absorbed in carrying out the examination that we forgot to send the forecast grade form in October. Actually, I had been trying to send the Forecast Grade using Cameo program, but I failed to install it. I couldn't find the location of Cameo in Direct CIE as recommended when installing it.

We are really sorry for this inconvenience. I promise not to make this mistake again in the future.

Thank you very much.

Faithfully yours,  
Kusworo

16. The writer has a problem in ....
- A. using direct CIE
  - B. finding the CIE address
  - C. filling the forecast grade form
  - D. finding the location of Cameo program
  - E. understanding the instruction in Cameo program
17. We conclude that the writer forgot to send the form because he ....
- A. misplaced the form
  - B. did not know the address
  - C. had to take an examination
  - D. was busy doing the examination
  - E. did not realize that the form was important

DOKUMEN NEGARA

SANGAT RAHASIA

9

**Bahasa Inggris SMA/MA IPA**

The following text is for questions 18 and 19

**Hotel Work :****One Month Training Course**

Suitable young men and women are invited to apply for places on the one month training course on hotel work organized by the Hong Kong Institute of Hotel Management. Tuition is free of charge and students who successfully complete the course will be offered employment in the Colony's leading hotels.

The Training Course will take place from Monday 21<sup>st</sup> July to Friday 22<sup>nd</sup> August, from 9 a.m. to 4.30 p.m. daily, except Saturdays and Sundays.

Applications for places on the course are welcome for students now in their third year at secondary school, who have good knowledge of English, and have interest in hotel work.

Application forms may be obtained from:

The Hong Kong Institute of Management,  
Box 948,  
The South China Times.

*The closing date for applications is April 29th*

18. Those who successfully complete the course will be given ....
- A. free tuition
  - B. a further training course
  - C. jobs in big hotels in the colony
  - D. a chance to stay in the colony's leading hotels for one month
  - E. membership of the Hong Kong Institute of Hotel management
19. What requirement is needed by an applicant to apply for the hotel work training?
- A. Able to speak Mandarin.
  - B. Secondary school graduate.
  - C. Good knowledge of English.
  - D. Reputable university graduate.
  - E. 2-year experience in hotel work.

DOKUMEN NEGARA

SANGAT RAHASIA

10

**Bahasa Inggris SMA/MA IPA****The following text is for questions 20 to 22****Wade Withdraws From US Basketball Team**

NEW YORK: Miami Heat guard Dwyane Wade withdrew his name from the player pool for the US Olympic basketball team on Thursday because his injured left knee will require surgery, USA Basketball said.

After receiving the diagnosis from the Heat team physician, the All-Star guard, who helped Miami win the NBA title in five games over the Oklahoma City Thunder, informed USA Basketball chairman Jerry Colangelo that he was having the surgery soon and would be unable to compete in London.

“As many people may know, throughout the season, I struggled with a recurring knee issue,” Wade said in a statement. “After the championship game, I visited my doctors for a round of comprehensive medical test, and the recent result dictated the need for surgery. While every part of me wants to be in London, I need to take this time to do what’s best to improve my health and allow me to continue to play the game I love.”

Wade was the US team’s leading scorer in their run 2008 Olympic gold in Beijing, scoring a game-high 27 points as the Americans beat Spain 118-107 in the Olympic final.

Despite having his knee drained during the NBA play-off, Wade averaged over 22 points a game during Miami’s championship series triumph over the Thunder.

Wade’s exit from the US squad left 17 players in the mix for 12 spots on The Olympic team following injuries that removed several players from consideration, including Derrick Rose of the Chicago Bulls and Dwight Howard of the Chicago Bulls.

-Reuters

20. Why can't Wade play for US basketball team?
  - A. He is too old to play basketball.
  - B. His injured left knee requires surgery.
  - C. He doesn't want to compete in London.
  - D. He wants to visit his doctor for a medical test.
  - E. He was removed from the US basketball team.
  
21. Based on the text, Dwyane Wade ....
  - A. will be a guard in the US Olympic basketball team
  - B. will never play basketball again for the US team
  - C. failed to play in Beijing Olympic Games
  - D. is the most valuable player in the Olympic Games
  - E. was the leading scorer for the US team in Beijing Olympic Games
  
22. What is the main idea of paragraph 3?
  - A. People know that Dwyane Wade has a problem.
  - B. Dwyane Wade visits his doctors for medical tests.
  - C. The doctors suggested Wade recovers his knee by surgery.
  - D. Dwyane Wade wants to improve his health to continue the game.
  - E. Dwyane Wade has struggled with his knee problem that he needs surgery.



DOKUMEN NEGARA

SANGAT RAHASIA

11



Bahasa Inggris SMA/MA IPA

The following text is for questions 23 to 25.

#### WATER HYBRID SYSTEM, AN ALTERNATIVE TO PETROLEUM

Jakarta: Cars and motorcycles have the long-term effect of destroying the environment by depleting fossil fuel. On top of that, the emissions released from the combustion system of an automobile can also cause the greenhouse effect. Carbon dioxide and carbon monoxide are two greenhouse gases that damage our earth's atmosphere. They could cause certain vegetation to die off, the snow caps to melt, and the earth's atmospheric temperature to increase.

Reducing the amount of these greenhouse gases will greatly help reduce these effects. That is why we need an alternative for petroleum.

Researchers are currently working on environmentally friendly and inexhaustible energy resources: water.

They have created a water-hybrid combustion system that converts vehicles to use water as a source of primary fuel. The engine derives fuel from hydrogen and oxygen, generated by the electrolysis of water. The only by-product resulting from the hydrogen and oxygen components of combustion within the engine is water vapour. Therefore, emissions are cleaner, with fewer polluting particles, as reported by Jinali Parekh.

The technology existed back in 1805 when a Swiss inventor named Isaac de Rivaz made the first car powered by water. There has been significant development of the technology since then, but recently researchers at the Massachusetts Institute of Technology are working on the use of hydrogen from water as an alternative fuel to drive cars.

23. What does the text tell about?
- A. The hybrid system of water.
  - B. The technology to create a new fuel.
  - C. The idea of an alternative to petroleum.
  - D. The general knowledge of hybrid system.
  - E. The hybrid system of water as an alternative to petroleum.
24. To help reduce the green-house effects, we need to ....
- A. produce green-house gases
  - B. minimize the amount of green-house gases
  - C. convert the vehicles to modern ones
  - D. create a new type of petroleum
  - E. create significant technology
25. "Reducing the amount of these greenhouse gases ...." (Paragraph 2)  
The underlined word is closest in meaning to ....
- A. keeping
  - B. allowing
  - C. managing
  - D. decreasing
  - E. converting

DOKUMEN NEGARA

SANGAT RAHASIA

12



Bahasa Inggris SMA/MA IPA

The following text is for questions 26 to 28.

### THE SCIENTIST HELP SHEEP DIES

Keith Campbell, a prominent biologist who worked on cloning Dolly the sheep, died at 58, the University of Nottingham said Thursday. Campbell, who had worked on animal improvement and cloning since 1999, died October 5, 2012, University spokesman Tim Utton said. He did not specify the cause, only saying that Campbell had worked at the university until his death.

He began researching animal cloning at the Roslin Institute near Edinburgh in 1991. In 1996 the experiments led to the birth of Dolly the sheep, the first mammal to be cloned from an adult cell.

The sheep was named after the voluptuous singer Dolly Parton. Researchers at the time said that the sheep was created from a mammary gland cell, and that Parton offered an excellent example.

The creation of the sheep captured the public imagination and instantly became a scientific sensation. The experiments drew not only admiration but also anger from some who raised questions about the ethics of cloning. Animal rights activists were outraged, while the church of England expressed reservations. Dolly was put down in 2003 after she developed a lung disease. Campbell's interest in cellular growth dated back to his college days studying microbiology in London.

26. Which of the following statements is TRUE according to the text?
- Campbell never felt leaving for the university.
  - Campbell stopped working because of his sickness.
  - Campbell focused his research dealing with humans.
  - Campbell started researching animal cloning as his experiments.
  - Campbell focused his research not only on the animal experiments.
27. Why did the experiments not draw admiration perfectly?
- Animal rights activists were outraged.
  - The public imagination became a scientific sensation.
  - Some people felt dissatisfied with the experiment results.
  - Some people were angry from their question about the ethics of cloning.
  - The experiments did not show the representative results of the cloning ethics.
28. Why was the sheep named after Dolly Parton?
- The researchers admired her.
  - She was a voluptuous singer.
  - She was a very popular singer.
  - The mammary gland cell was taken from her.
  - She was the one who inspired the researchers.

DOKUMEN NEGARA

SANGAT RAHASIA

13



Bahasa Inggris SMA/MA IPA

The following text is for questions 29 to 32.

Brain cancer might be categorized as the worst and the deadliest disease. Approximately 17.000 people in the United States are diagnosed with primary cancer each year and nearly 13.000 die of the disease.

The brain is made up of individual cells. These cells are the smallest units which compose the brain. A brain cancer can arise from any of the cells, which make up the brain. Brain cancer starts in just one cell. As the cell makes more and more copies of itself, it grows to form a tumor. A malignant tumor has a capacity to spread, and is then called "brain cancer"

"Primary brain cancer" starts within the brain, and is the main subject of the transcript. In contrast, "secondary brain cancer" starts in some other organs (like lung or breast) and then spread to the brain. This is called "brain metastasis"

There are several things that have been found to increase the risk of developing brain cancer. Having rare family disease (such as neurofibromatosis, Von-Hippel Lindau), exposure to radiation, and exposure to certain chemicals (like pvc) have been connected to developing brain cancer. The risk is greater if the person is exposed to at a young age to a higher dose.

29. Brain cancer can occur because ....
- A. tumor grows in other organs within the body
  - B. cells are contacted to radiation
  - C. it starts when exposed to radiation
  - D. one cell multiplies itself and forms tumor
  - E. the metastasis of tumor is to spread in a cell
30. Secondary brain cancer happens when ....
- A. it copies itself to tumor
  - B. the cells spread to the brain
  - C. it starts from some other body organs
  - D. the cells grow to compose tumor
  - E. the individual cell copies itself to another cell
31. From the text, we conclude that brain cancer ....
- A. is contagious
  - B. is very harmful
  - C. can make a long life
  - D. compose cell organs
  - E. makes the cells died
32. "... are diagnosed with primary ..." (paragraph 1)  
The underlined word has the closest in meaning to ....
- A. treated
  - B. spreaded
  - C. exposed
  - D. examined
  - E. identified

DOKUMEN NEGARA

SANGAT RAHASIA

14

**Bahasa Inggris SMA/MA IPA****The following text is for questions 33 to 35**

Faster planes and cheaper flights are making it easier than ever before for people to travel. In the most 'developed' societies, visiting exotic places is a sought-after status symbol. The tourism industries of both developed and developing countries have recognised this fact and are learning to take advantage of it.

There are, however, some problems associated with this new industry. Firstly, there is the increasing crime rate. Some locals see tourists as an easy prey because, not only are they in unfamiliar territory and therefore less able to take care of themselves, but also they carry visible items of wealth, such as cameras and jewelery which can be disposed of quickly for profit.

Another major problem is health. With greater mobility comes greater danger of spreading contagious diseases around the world. One carrier returning home could easily start an epidemic before their illness was diagnosed. Moreover, the emergence of many diseases which resist antibiotics is causing scientists to be increasingly concerned about this issue.

Also to be considered is the natural environment, which can be seriously threatened by too many visitors. Australia's Great Barrier Reef, for example, is in danger of being destroyed by tourists and there are plans to restrict visitors to some of the more delicate coral cays

These are just three of the reasons why any country should be wary of committing itself to an extensive tourism development program.

33. Why does the natural environment become one of the serious problem associated with the faster planes and cheaper flight? Because ....
- it easily started an epidemic before their illness was diagnosed
  - it can be destroyed by too many visitors
  - the health problem will increase
  - they carry visible items of wealth
  - it can increase crime rate
34. Why is the crime rate increasing due to the new industry?
- Some tourists carry visible items of wealth.
  - The tourists are spreading contagious diseases.
  - The government is planning to restrict visitors to some coral cays.
  - The new industry makes the number of unemployment increase.
  - The tourists come by plane.
35. "One carrier returning home could easily start an epidemic before their illness was diagnosed." (Paragraph 3)  
The underlined word means ....
- found
  - observed
  - identified
  - examined
  - healed

DOKUMEN NEGARA

SANGAT RAHASIA

15

**Bahasa Inggris SMA/MA IPA**

The following text is for questions 36 to 38.

**Tim Burton's "Alice in Wonderland"** was probably the most anticipated movie of the year 2010. But is it any good? First of all, I should probably mention that hardcore Lewis Carroll fans may find it very disappointing. The movie is merely based on the book. It features most of the same characters and a couple of the same locations, but the story is completely different.

Alice is no longer a little girl, but an unconventional young woman who has the same dream of finding herself in Wonderland every night, until one day it happens in real life. Her arrival was expected. Alice is supposed to save the inhabitants from the evil Red Queen and get the reign back to her kind sister, the White Queen. She knows nothing about it, but she is meant to be the knight in shining armor, both figuratively and literally speaking.

36. The writer mentions that "Alice in Wonderland" movie is ....
- A. in a girl's dream
  - B. the true story of the writer
  - C. a movie taken from a book
  - D. the best movie of the year 2010-
  - E. about Lewis Carroll's biography
37. The character of Alice in Tim Burton's "Alice in Wonderland" was that ....
- A. she was a young woman
  - B. she was characterized as a little girl
  - C. Red Queen changed her as a little girl
  - D. fans of the film were disappointed with her
  - E. she was also characterized as White Queen
38. From the text above we can conclude that ....
- A. the movie is a common movie
  - B. the setting of the story is realistic
  - C. the movie forces us to have dreams
  - D. the content of the movie is far from the book
  - E. the screenplay writer of the movie is disappointed

DOKUMEN NEGARA

SANGAT RAHASIA

16

**Bahasa Inggris SMA/MA IPA****The following text is for questions 39 to 41.**

There are many reasons for keeping dogs as pets in the city area, but many people feel that keeping pet dogs should not be allowed in the city.

Dogs are often not taken care properly. They are kept in small backyards and rarely taken for walks. They are left in the yard all day by themselves while the family is at work. Very little attention is given to the dog and it is not a very good life for it. It is no wonder why these dogs bark and disturb the neighbours and become a nuisance to the community.

On the other hand, not all people treat their dogs this way and why should the people receive a lot of pleasure and enjoyment from dog's suffer? Dogs can make a lonely person's life happy or make wonderful playmate. It can also teach a child responsibility as they not only get to lay with the dog, but also need to exercise, feed, and care for the dog

I feel that we should be allowed to keep dogs in the city, because if it is taken care of properly, dogs can be a great source of pleasure. As a child I used to enjoy playing and taking care of my pet. There is not greater loyalty a person can get than from a well-cared dog.

39. Some people do not like the presence of pet dogs in their surroundings because ....
- A. the dogs are left in the yards
  - B. the dogs are often neglected
  - C. the dogs often bark and disturb the neighbours
  - D. the dogs play with the owner's child
  - E. the dogs guard the security of the environment
40. The main idea of the last paragraph is ....
- A. pet dogs are loyal animals
  - B. pet dogs are more loyal than humans
  - C. dogs can be a great source of pleasure
  - D. the writer has no objection to keeping dogs in the city
  - E. the writer used to play and took care of his pet when he was a child
41. We can infer from the text that keeping pet dogs in the city will not cause any problem as long as ....
- A. the dogs are amusing
  - B. the neighbours like having pet dogs
  - C. the dogs do not bark at the neighbours
  - D. the writer has succeeded in persuading the neighbours
  - E. its presence does not disturb the neighbourhood

DOKUMEN NEGARA

SANGAT RAHASIA

17

**Bahasa Inggris SMA/MA IPA**

The following text is for questions 42 to 44.

A kangaroo is an animal found only in Australia. It has a smaller relative, called a wallaby, which lives on the Australian island of Tasmania and in New Guinea.

Kangaroos eat grass and plants. They have short front legs, but very long and strong back legs and a tail. These are used for sitting up and for jumping. Kangaroos have been known to make forward jumps of over eight metres, and leap across fences more than three metres high. They can also run at speeds of over 45 kilometres per hour.

The largest kangaroos are the Great grey kangaroo and the Red Kangaroo. Adult grows to a length of 1.60 metres and weighs over 90 kilos.

Kangaroos are marsupials. This means that the female kangaroo has an external pouch on the front of her body. A baby kangaroo is very tiny when it is born, and it crawls at once into this pouch where it spends its first five months of life.

42. According to the text, the kangaroo ....
- A. can grow as tall as a man
  - B. can run faster than a car
  - C. can walk as soon as it is born
  - D. can jump over a 3 metres- high fence
  - E. can live in a pouch during its life
43. ... are used for sitting up and for jumping
- A. Long tails
  - B. Short legs
  - C. Body pouch
  - D. Short front legs
  - E. Strong back legs
44. We know from the text that kangaroo ....
- A. is smaller in size to human
  - B. is an omnivorous animal
  - C. has habitat in Tasmania
  - D. can be called Wallaby in New Guinea
  - E. has another name called Wallaby

DOKUMEN NEGARA

SANGAT RAHASIA

18

**Bahasa Inggris SMA/MA IPA**

The following text is for questions 45 and 46.

**Simatupang and Partners Law Firm**

is pleased to announce that they have opened  
their law practice on September 1, 2012 in 4 different cities

New clients are welcome

A law firm for all family matters:

real estate, estate planning & administration, traffic, personal injury  
divorce/custody/support, wills/trust, adoption, and home visits

Main Office : Jalan Kebayoran 5 Bandung

Branches : Jalan Angsana Timur 456 Jakarta

Jalan Agiwiyata 688 Surabaya

Jalan Surabaya 343 Bogor

A new branch office in Semarang will open next month.

45. According to the text, clients who live in Surabaya can go to ... branch office for consultation.
- Jalan Kebayoran 5
  - Jalan Angsana Timur 456
  - Jalan Agiwiyata 688
  - Jalan Surabaya
  - Semarang
46. From the text, we know that ....
- the law firm has six offices
  - the main office is in Surabaya
  - the office has four branch offices now
  - they recently opened a branch in Bandung
  - they will soon have five offices in Indonesia
47. **Arrange these sentences below into a good order.**
- Grate the cheese into the bowl and stir.
  - Then turn omelette with a spatula when it brown.
  - First, crack an egg into a bowl.
  - Heat the oil in a frying fan, and pour the mixture into the frying fan.
  - Next cook both side and it is ready to serve.
  - Whisk the eggs with a fork until it is smooth.
- 3-5-1-2-4-6
  - 3-6-1-4-2-5
  - 3-2-6-1-4-5
  - 3-2-4-1-6-5
  - 3-1-6-4-2-5



DOKUMEN NEGARA

SANGAT RAHASIA

19

**Bahasa Inggris SMA/MA IPA****Questions 48 to 50: complete the following text with the words provided.**

Long ago, a rich man wanted the very best education for his son, and so he sent him abroad to learn other languages. A few years later when the young man returned home, the only language he had learnt was the dog's language. The father was so indignant that he drove his son out of the house, and said that he wished to have nothing further to do with him. The young man (48) ... his house with his broken heart.

After a great deal of wandering, the young man arrived in a village which was terrorized by a group of fierce dogs. Although everybody had advised him not to wander there, the young man insisted on going into the wood where dogs lived, and, too much amazement, he returned without even a (49) .... He said that the dogs has spoken to him, explaining they were (50) ... because they were compelled by a spell to keep guard all the time over a rich treasure chest buried in the woods. The young man solved all the problems by digging up the chest for himself, so the dogs troubled the villagers no further and were free to wander.

48.      A. saw  
          B. left -  
          C. took  
          D. visited  
          E. destroyed
49.      A. fight  
          B. bark  
          C. pack  
          D. crack  
          E. scratch
50.      A. sad  
          B. tame  
          C. greedy  
          D. fierce  
          E. disappointed