

DOKUMEN NEGARA

SANGAT RAHASIA



3

Bahasa Inggris SMA/MA IPA

Nama :	
No Peserta :	

Listening Section

In this section of the test, you will have the chance to show how well you understand spoken English. There are four parts to this section with special direction for each part.

PART I**Questions 1 to 4.****Directions:**

In this part of the test, you will hear some dialogues and questions spoken in English. The dialogues and the questions will be spoken twice. They will not be printed in your test book, so you must listen carefully to understand what the speakers are saying.

After you listen to the dialogue and the question about it, read the five possible answers, and decide which one would be the best answer to the question you have heard. Now listen to a sample question.

You will hear:

Man : I give up! I'll stop learning French.

Woman : Why do you say that? You are making a lot of progress.

Man : No, I'm not. I've tried hard but still I cannot speak it well.

Woman : How come? You can speak Arabic, Hindi, Japanese and even Russian well, can't you?

Narrator : What language is difficult for the man to learn?

- A. Hindi.
- B. Arabic.
- C. French.
- D. Russian.
- E. Japanese.

The best answer to this question is "French". Therefore you should choose answer (C).

1.
 - A. Job vacancy.
 - B. Job interview.
 - C. Printing company.
 - D. Getting high salary.
 - E. Finding a job.

2.
 - A. A novel.
 - B. A comic.
 - C. A magazine.
 - D. A science book.
 - E. An English Grammar Book.

DOKUMEN NEGARA

SANGAT RAHASIA



4

Bahasa Inggris SMA/MA IPA

3. A. The exam is easy.
 B. This time will not fly.
 C. The exam is in three weeks.
 D. He knows many things about the exam.
 E. He still has three days for the exam preparation.
4. A. She came to Nisa's party.
 B. She couldn't make a party.
 C. She had to go to a doctor.
 D. She invited the man to a party.
 E. She didn't go to Nisa's party.

PART II**Questions: 5 to 7.****Directions:**

In this part of the test, you will hear some incomplete dialogues spoken in English, followed by four responses, also spoken in English. The dialogues and the responses will be spoken twice. They will not be printed in your test book, so you must listen carefully to understand what the speakers are saying. You have to choose the best response to each question.

Now listen to a sample question.

Man : Hey, Cindy could you do me a favour?

Woman : What can I do for you?

Man : Would you mind going to the post office to send my letter?

Woman :

Narrator : What is the woman's possible response?

A. I am all out. Sorry.

B. I love to write letters.

C. Sure, by all means.

D. It's next to the police station.

Narrator : The best answer to the question is: "Sure, by all means." Therefore you should choose answer (C).

5. Mark your answer on your answer sheet.
6. Mark your answer on your answer sheet.
7. Mark your answer on your answer sheet.

DOKUMEN NEGARA

SANGAT RAHASIA

5



Bahasa Inggris SMA/MA IPA

PART III

Questions 8 to 11.

Directions:

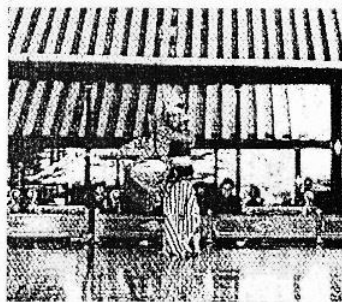
In this part of the test, you will hear some dialogues or monologues spoken in English. The dialogues or monologues will be spoken twice. They will not be printed in your test book, so you must listen carefully to understand what the speakers are saying. After you listen to the dialogue or monologue, look at the five pictures provided in your test book, and decide which would be the most suitable one with the dialogue or monologue you have heard.

8.

A.



B.



C.



D.



E.



9.

A.



B.



C.



D.



E.



DOKUMEN NEGARA

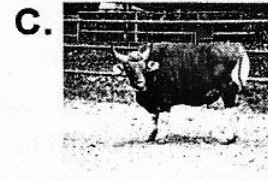
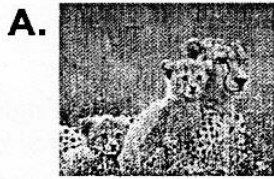
SANGAT RAHASIA

6

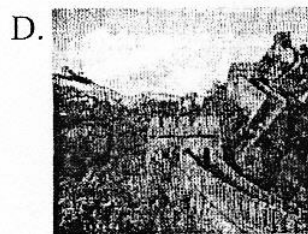
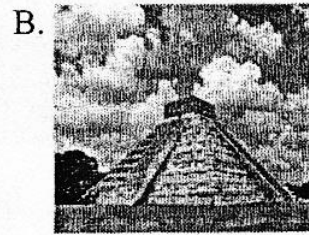
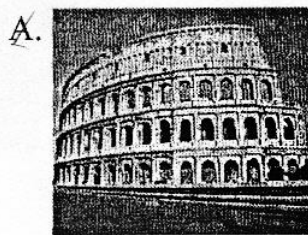


Bahasa Inggris SMA/MA IPA

10.



11.

**PART IV****Questions 12 to 15.****Directions:**

In this part of the test, you will hear several monologues. Each monologue will be spoken twice. They will not be printed in your test book, so you must listen carefully to understand what the speakers are saying.

After you hear the monologue and the question about it, read the five possible answers and decide which one would be the best answer to the question you have heard.

Questions 12 and 13 are based on the following monologue.

12. A. Paris.
B. The Louvre.
C. Notre Dame
D. The crowded city.
E. The City of Light.

DOKUMEN NEGARA

SANGAT RAHASIA



7

Bahasa Inggris SMA/MA IPA

13. A. The Louvre.
 B. The Cathedral.
 C. The Eiffel Tower.
 D. The lovely garden.
 E. The light structure.

Questions 14 and 15 are based on the following monologue.

14. A. Other beasts.
 B. The water.
 C. The frogs.
 D. A lake.
 E. A horse.
15. A. They ate an animal.
 B. They lived in a lake.
 C. They saw wild horses.
 D. They went somewhere.
 E. They jumped into water.

This is the end of the listening section

DOKUMEN NEGARA

SANGAT RAHASIA

8

**Bahasa Inggris SMA/MA IPA****The following text is for questions 16 and 17**Yogyakarta, December 12th, 2012

University of Cambridge International Examination
Cambridge Assessment DC 10
Hill Farm Road
Whittlesford
Cambridge CB2 4FZ, England

Dear Sir/Madam,

I would like to apologize for sending the Forecast Grade form of our CIE candidates very late. I have overlooked the deadline to send this form. I had been so absorbed in carrying out the examination that we forgot to send the forecast grade form in October. Actually, I had been trying to send the Forecast Grade using Cameo program, but I failed to install it. I couldn't find the location of Cameo in Direct CIE as recommended when installing it.

We are really sorry for this inconvenience. I promise not to make this mistake again in the future.

Thank you very much.

Faithfully yours,
Kusworo

16. The writer has a problem in
- A. using direct CIE
 - B. finding the CIE address
 - C. filling the forecast grade form
 - D. finding the location of Cameo program
 - E. understanding the instruction in Cameo program
17. We conclude that the writer forgot to send the form because he
- A. misplaced the form
 - B. did not know the address
 - C. had to take an examination
 - D. was busy doing the examination
 - E. did not realize that the form was important

DOKUMEN NEGARA

SANGAT RAHASIA

9

**Bahasa Inggris SMA/MA IPA**

The following text is for questions 18 and 19

Hotel Work :**One Month Training Course**

Suitable young men and women are invited to apply for places on the one month training course on hotel work organized by the Hong Kong Institute of Hotel Management. Tuition is free of charge and students who successfully complete the course will be offered employment in the Colony's leading hotels.

The Training Course will take place from Monday 21st July to Friday 22nd August, from 9 a.m. to 4.30 p.m. daily, except Saturdays and Sundays.

Applications for places on the course are welcome for students now in their third year at secondary school, who have good knowledge of English, and have interest in hotel work.

Application forms may be obtained from:

The Hong Kong Institute of Management,
Box 948,
The South China Times.

The closing date for applications is April 29th

18. Those who successfully complete the course will be given
- A. free tuition
 - B. a further training course
 - C. jobs in big hotels in the colony
 - D. a chance to stay in the colony's leading hotels for one month
 - E. membership of the Hong Kong Institute of Hotel management
19. What requirement is needed by an applicant to apply for the hotel work training?
- A. Able to speak Mandarin.
 - B. Secondary school graduate.
 - C. Good knowledge of English.
 - D. Reputable university graduate.
 - E. 2-year experience in hotel work.

DOKUMEN NEGARA

SANGAT RAHASIA

10

**Bahasa Inggris SMA/MA IPA****The following text is for questions 20 to 22.****INDONESIANS SHINE AT 'RUN FOR FRIENDS**Nethy Dharma Somba

The Jakarta Post / Jayapura

Two hundred runners from Indonesia and Papua New Guinea (PNG) ran from Wutung to Skouw in the International Cross Border 10K on Wednesday.

The race started at Wafa village, Vanimo, 7.5 kilometers from the RI-PNG border in Wutung, PNG, and finished in Skouw, Indonesia. The event, which took 'Run for Friendship' as its theme, started at 8 a.m. Eastern Indonesia Time.

Heavy rain did not affect the participants who kept in high spirits throughout the race. The event was dominated by male runners. There were only eight female runners in the event.

Hanafi of Indonesia came in first place in the male category, completing the course in 31 minutes. Another Indonesian national, FG Manori, took first place in the female category, completing the course 44 minutes. The winner in both categories received a cash prize of Rp 5 million each.

The cross border race was the first of its kind held between the two neighbouring countries and was made possible thanks to cooperation between the Indonesian Papua province administration and the PNG Sandaun provincial administration, as well as the support of PT. Freeport Indonesia as the event partner.

20. Why did the heavy rain not affect the participants?
- They had high spirits.
 - They saved a lot of energy.
 - They wanted to be the winner.
 - They were willing to be popular.
 - They took part in the competition well.
21. Which of the following statements is TRUE according to the text?
- Hanafi was the winner.
 - Manori was the first nominee.
 - Some of the runners did not have spirits.
 - Both male and female winners were PNG athletes.
 - The male and female winners got different prizes.
22. The third paragraph tells us
- that only eight of 200 people were female
 - that the event was dominated by male participants
 - about the effect of the heavy rain for the participants
 - that the heavy rain made all of the participants worried
 - that the heavy rain did not decrease the spirits of the participants

DOKUMEN NEGARA

SANGAT RAHASIA

11



Bahasa Inggris SMA/MA IPA

The following text is for questions 23 to 25.

**A mouse that cured
A new ally against cancer**

Dr. Megan Sykes, a medical researcher, has a mouse with a human immune system – her own. She calls it “Mini- Me.”

There are also mice containing a part of 9 year old Michael Feeney- a cancerous tumor extracted from his lungs. Researches have tasted various drugs on the mice, hoping to find the treatment that would work best for Michael.

In what could be the ultimate in personalized medicine, animals bearing your disease, or part of your anatomy, can serve as your personal guinea pig, so to speak. Some researches call them avatars, like the virtual characters in movies and online games.

“The mice allow you the opportunity to test drugs to find out which ones will be efficacious without exposing the patient to toxicity.” said Colin Collins, a professor at the University of British Columbia.

Experiments on mice have been done for decades, including implanting people’s tumors into the animals. But the techniques have improved in the past few years and interest is growing. The National Institutes of Health in Bethesda, Maryland, held a workshop on personalized animal models which are mainly being used for research. Companies are beginning to commercialize them for use in drug development and medical treatment as well.

Experts caution that it has not been proved that the use of avatars will prolong the lives of cancer patients. And it costs tens of thousands of dollars, which insurer will not cover, to create and test a colony of the animals.

‘It’s an act of faith to say this is a superior way of proceeding,” said Dr. Edward Sausville, a professor of medicine at the University of Maryland.

23. What is the text about?
- A. The commercialization of the mice for drugs development.
 - B. The use of mice in medical research against cancer.
 - C. The implanting people’s disease into animal.
 - D. Human immune system called mini me.
 - E. The drugs treatment on the mice.
24. Why did the research use mice? Because
- A. it will not do any harm to the patient
 - B. the mice can serve as your personal guinea pig
 - C. the result will help prolong the lives of cancer patients
 - D. the mice contain a cancerous tumor
 - E. the result will help improve the medical technique
25. “... a cancerous tumor extracted from his lungs.” (paragraph 2)
The underlined word is synonymous with ...
- A. removed
 - B. pushed
 - C. reveled
 - D. pressed
 - E. taken

DOKUMEN NEGARA

SANGAT RAHASIA

12

**Bahasa Inggris SMA/MA IPA****The following text is for questions 26 to 28**

Named after one of her father's favorite crocodiles, Bindi Sue Irwin first appeared in front of the cameras when she was only a few weeks old. Her father, Steve Irwin, was the star of the popular nature program, *The Crocodile Hunter*.

Irwin shared her parent's passion for wildlife. Home-schooled, she grew up surrounded by the animals at the Australian Zoo which is owned and operated by her family.

She experienced a terrible loss in 2006 when her father died after being stung by a stingray while snorkeling on Australia's Great Barrier Reef. At Steve Irwin's memorial service, held at the Australian Zoo, she spoke warmly of her father, calling him "her hero".

In memory of her father, Irwin starred in the 2007 television documentary *My Daddy the Crocodile Hunter*. She continued to work on her new wildlife series for American television, *Bindi: The Jungle Girl*, which debuted that same year, with the young wildlife enthusiast educating and entertaining viewers with stories about animals. She rode an elephant, played with a python and introduced her audience to her pet rat, Candy. Irwin even sang and danced on the show with her back-up group, known as the Crocmen. Along with her mother, Irwin also appeared in the documentary series, *Planet's Best with Terri and Bindi*, around time.

Though the show only lasted for 26 episodes, *Bindi: The Jungle Girl* found a second life on Australian television. The series aired there in 2009. Back in the states, Irwin has made appearances on such talk shows as *The Oprah Winfrey Show* in recent years.

26. What can we learn from the text about Bindi Irwin?
- She shared her parent's passion for wildlife.
 - She and her mother visited the zoo every holiday.
 - Her teacher taught about various animals at school.
 - She had a dream of building a zoo in Australia.
 - Her parents forced her to live around animals.
27. How did Steve Irwin die?
- Stung by a stingray while snorkelling.
 - Bitten by his favourite crocodile, Bindi.
 - Stomped by an elephant after riding it.
 - Surrounded by animals in Australian zoo.
 - Drowned in Australia's Great Barrier Reef.
28. How did Irwin's family continue their life, after Steve left them for good?
- They continued doing things related to animals.
 - They totally stopped working on animal projects.
 - They kept hunting stingrays which caused him died.
 - They appointed a team to investigate his tragic death.
 - They sold all pets they had then studied at a university.

DOKUMEN NEGARA

SANGAT RAHASIA

13



Bahasa Inggris SMA/MA IPA

The following text is for questions 29 to 32.

How Chocolate is made:

Have we wondered how we get chocolate from? Well this time we will enter the amazing world of chocolate so we can understand exactly how chocolate is made.

Chocolate is taken from a tree called cacao tree. This tree grows in equatorial regions, especially in places such as South America, Africa, and Indonesia. The cacao tree produces a fruit about the size of a small pine apple. Inside the fruits are the tree's seeds. They are also known as coco beans.

Next, the beans are fermented for about a week, dried in the sun. After that they are shipped to the chocolate maker. The chocolate makers work by roasting the beans to bring out the flavour. The beans from different places have different qualities and flavour. So they are often sorted and blended to produce a distinctive mix.

The next process is winnowing. The roasted beans are winnowed to remove the meat nib of cacao bean from its shell. Then the nibs are blended. The blended nibs are grinds to make liquid. The liquid is called chocolate liquor. It tastes bitter.

All seeds contain some amount of fat and cacao beans are not different. However, cacao beans are half fat. It is pure bitter chocolate.

29. Why are the coco beans roasted?
- To have good looking.
 - To have good taste.
 - To bring out its colour.
 - To make it well-looking.
 - To have it burned.
30. What is called 'chocolate liquor'?
- The fermented coco.
 - The grounded beans.
 - The meat nib of coco.
 - The liquid out of roasted beans.
 - The liquid made of chocolate grinds.
31. The most important stage to have good flavour of the chocolate is in
- the sorting
 - the fermenting
 - the roasting
 - the winnowing
 - the grinding
32. "After that they are shipped to the chocolate maker." (paragraph 3)
The underline words is closest in meaning to
- exported
 - delivered
 - chosen
 - sorted
 - sold

DOKUMEN NEGARA

SANGAT RAHASIA

14

**Bahasa Inggris SMA/MA IPA****The following text is for questions 33 to 35**

Faster planes and cheaper flights are making it easier than ever before for people to travel. In the most 'developed' societies, visiting exotic places is a sought-after status symbol. The tourism industries of both developed and developing countries have recognised this fact and are learning to take advantage of it.

There are, however, some problems associated with this new industry. Firstly, there is the increasing crime rate. Some locals see tourists as an easy prey because, not only are they in unfamiliar territory and therefore less able to take care of themselves, but also they carry visible items of wealth, such as cameras and jewelery which can be disposed of quickly for profit.

Another major problem is health. With greater mobility comes greater danger of spreading contagious diseases around the world. One carrier returning home could easily start an epidemic before their illness was diagnosed. Moreover, the emergence of many diseases which resist antibiotics is causing scientists to be increasingly concerned about this issue.

Also to be considered is the natural environment, which can be seriously threatened by too many visitors. Australia's Great Barrier Reef, for example, is in danger of being destroyed by tourists and there are plans to restrict visitors to some of the more delicate coral cays

These are just three of the reasons why any country should be wary of committing itself to an extensive tourism development program.

33. Why does the natural environment become one of the serious problem associated with the faster planes and cheaper flight? Because
- A. it easily started an epidemic before their illness was diagnosed
 - B. it can be destroyed by too many visitors
 - C. the health problem will increase
 - D. they carry visible items of wealth
 - E. it can increase crime rate
34. Why is the crime rate increasing due to the new industry?
- A. Some tourists carry visible items of wealth.
 - B. The tourists are spreading contagious diseases.
 - C. The government is planning to restrict visitors to some coral cays.
 - D. The new industry makes the number of unemployment increase.
 - E. The tourists come by plane.
35. "One carrier returning home could easily start an epidemic before their illness was diagnosed." (Paragraph 3)
The underlined word means
- A. found
 - B. observed
 - C. identified
 - D. examined
 - E. healed

DOKUMEN NEGARA

SANGAT RAHASIA

15

**Bahasa Inggris SMA/MA IPA****The following text is for questions 36 to 38.**

My family of three went to see an early screening of the new Disney movie, "Brave" yesterday, so I thought I would write a quick "mommy" review of the movie.

Disney definitely breaks the standard "Disney Princess" mold with this movie as Princess Merida is a fun, outgoing and wild girl that for once is not in search for the love of a prince. The characters in the movie are entertaining and I loved the way that the Scottish culture comes out in the movie. I found myself wishing for more music though, which is one of the things that I truly love about past Disney movies. I would compare this movie more with "Shrek" than a movie like "Tangled."

As to the age of the kids that would like this movie I would have to say maybe 5 years old and up. The movie is not quite engaging enough for very young viewers, which was a little disappointing for our three years old. There were parts of the movie that our daughter enjoyed, but it is engaging enough for younger viewers in the audience and made them cry, so be forewarned of this if you are bringing children under the age of five years old.

I've always been a big fan of Disney movies so on a 5-star scale I would rate this 4-star movie. It's definitely not a favourite, but I give it four stars for the relationship that build between Merida and her mother. I think this offers a great lesson to appreciate your family and truly listen to each others needs and concerns.

36. What does the writer think of the music in "Brave"?
- A. Too much.
 - B. Too little.
 - C. Wild enough.
 - D. Demonstrative.
 - E. Very beautiful.
37. What does the reviewer think of the movie?
- A. It is definitely not her favourite.
 - B. It has a good music composition.
 - C. It is the same as the other Disney movies.
 - D. It does not have any lesson for the children.
 - E. It gives a bad impression of a mom and a daughter.
38. How does the writer feel about the movie?
- A. Amazed.
 - B. Frustrated.
 - C. Appreciative.
 - D. Disappointed.
 - E. Not worthy enough.

DOKUMEN NEGARA

SANGAT RAHASIA

16

**Bahasa Inggris SMA/MA IPA**

The following text is for questions 39 to 41.

Animal testing is a deeply divided subject, with a great deal of passion, emotion, and ideas on both sides regarding the ethic of the practice. Some individuals support animal testing and some others oppose its use.

The scientific community is strongly in favour in animal testing. The medical breakthroughs that have occurred as a result of animal testing are considered reason enough to continue the practice, with the aim of reducing human suffering and saving human lives. Animal testing aids researchers in finding drugs and treatments to improve health and medicine. Many medical treatments have been made possible by animal testing, including cancer and HIV drugs, insulin, antibiotics, vaccines, and many more. Animal testing also helps to ensure the safety of drugs and many other substances humans use or are exposed to regularly. Scientists typically use animals for testing purpose because they are considered similar to humans.

The contra on the issue of animal testing is that countless animals are experimented on and then killed after their use. Others are injured and will still live the rest of their lives in captivity. Many of these animals received tests for substances that will never actually be used for public consumption and use. Animal testing generally costs an enormous amount of money as the animals must be fed, housed, cared for and treated with drugs or experimental substances. The price of the animal themselves must also be factored into equation.

As a result of the controversy, regulations and laws should be enforced. At the very least, animal suffering should be minimized and that animals should be respected during their care. If animal testing is to continue, animals must be abused.

39. Which of the following is the reason why scientists use animals for testing?
- A. Animals are the same as humans.
 - B. Animals and humans are regarded be alike.
 - C. Animals can reduce human suffering.
 - D. Medical treatments can be given to animals.
 - E. Cancer and HIV can be found in animals.
40. The main idea of paragraph 3 is
- A. the practice of animal testing is intolerable
 - B. animals need to be fed, housed, and cared for
 - C. drugs and experimental substances are useless
 - D. animal testing costs enormous amount of money
 - E. animal testing causes many animals live in captivity
41. From the text above, we can conclude that
- A. medical experiments should be limited
 - B. pet lovers are in favour in animal testing
 - C. animal testing is against the laws and regulations
 - D. vaccines used today have been tested on animals
 - E. patients never get benefit from the practices of animal testing

DOKUMEN NEGARA

SANGAT RAHASIA

17

**Bahasa Inggris SMA/MA IPA****The following text is for questions 42 to 44**

The respiratory system, in anatomy and physiology, are organs that deliver oxygen to the circulatory system to be transported to all body cells. The respiratory and circulatory system work together to deliver oxygen to cells and remove carbon dioxide in a two-phase process called respiration.

The first phase of respiration begins with breathing in, or inhalation. Inhalation brings air from outside the body into the lungs. Oxygen in the air moves from the lungs through blood vessels to the heart, which pumps the oxygen-rich blood to all the body. Oxygen then moves from the bloodstream into cells, which completes the first phase of respiration. In the cells, oxygen is used in a separate energy-producing process called cellular respiration, which produces carbon dioxide as a by product.

The second phase of respiration begins with the movement of carbon dioxide from the cells to the bloodstream. The bloodstream carries carbon dioxide to the heart, which pumps the carbon dioxide-laden blood to the lungs. In the lungs, breathing out, or exhalation, removes carbon dioxide from the body, thus completing the respiration cycle.

42. How does a complete respiration cycle work?
- A. It delivers oxygen to the cells and removes carbon dioxide from the cells.
 - B. It works apart from respiratory and circulatory system.
 - C. It removes carbon dioxide from the human body.
 - D. It delivers oxygen to the circulatory system.
 - E. It inhales air from outside the human body.
43. The first phase of respiration completes when
- A. oxygen changes to carbon dioxide
 - B. the air goes from the lungs to the heart
 - C. carbon dioxide moves to the bloodstream
 - D. oxygen moves from bloodstream to the heart
 - E. oxygen moves from the bloodstream into cells
44. We know from the text that the respiratory system
- A. removes oxygen from the blood stream
 - B. exhales oxygen and inhales carbon dioxide
 - C. is the producer of oxygen and carbon dioxide
 - D. inhales oxygen and exhales carbon dioxide
 - E. is the processing center of healthy air

DOKUMEN NEGARA

SANGAT RAHASIA

18



Bahasa Inggris SMA/MA IPA

The following text is for questions 45 and 46

PT SUMI INDO KABEL Tbk.
(“The Company”)
ANNOUNCEMENT
TO ALL THE SHAREHOLDERS

This is to inform the shareholders of PT. SUMI INDO KABEL Tbk. (“Company”) that the Annual General meeting of shareholders (“meeting”) shall be held on Monday September 10, 2012

The invitation for the meeting shall be announced on Thursday, August 9, 2012 in (two) newspapers.

Those who are entitled to attend or wish to be represented at the meeting by proxies and eligible to vote at the meeting are shareholders whose names are recorded in the Company’s register of shareholders on Wednesday, August 8, 2012 at 4 p.m..

Shareholders who will submit their proposal to the agenda of meeting in accordance with the Company’s Articles of Association must send it to the Directors at the latest 7 (seven) days before invitation of meeting.

Tangerang, July 25, 2012

PT. SUMI INDO KABEL Tbk
Director

45. The invitation will be announced on ...
- A. July 25, 2012
 - B. August 2, 2012
 - C. August 9, 2012
 - D. August 8, 2012
 - E. September 10, 2012
46. According to the text, the shareholders should
- A. send their proposal a week before the invitation of the meeting
 - B. announce the invitation for the meeting on Thursday
 - C. make a proposal during the meeting and represent it
 - D. receive an invitation and a proposal from the Directors
 - E. inform the invitation to the other shareholders

DOKUMEN NEGARA

SANGAT RAHASIA



19

Bahasa Inggris SMA/MA IPA

47. Arrange the sentences below into a correct and meaningful paragraph!
1. Nori is the dark green seaweed used to wrap sushi and California rolls.
 2. Finally, you can also sprinkle thin strip of salty nori on top of a bowl of tomato Soup-Yum!
 3. This is how Nori is used to wrap sushi.
 4. It is delicious, intensely flavoured and good for you, containing useful amounts of a variety of minerals including iodine.
 5. Secondly, dress with soy sauce, lemon juice, fresh ginger and sesame oil.
 6. First of all, snap sheet of nori with scissors and add to an omelete with shallot.
- A. 6 – 5 – 2 – 3 – 1 – 4
B. 2 – 6 – 1 – 3 – 5 – 4
C. 1 – 4 – 3 – 6 – 5 – 2
D. 1 – 3 – 4 – 6 – 5 – 2
E. 1 – 5 – 6 – 3 – 4 – 2

Questions 48 to 50, complete the following text with the words provided.

THE FLY AND THE BULL

There was once a little fly who thought he was very important. He felt proud of himself. One sunny morning, he flew around looking for someone to talk to. He saw a bull grazing in a field. He decided to fly down to talk to him.

The little fly flew down and buzzed around the bull's head. The bull did not bother him. He went on chewing grass.

The fly then (48) ... right inside the bull's ear. The bull continued chewing grass. The fly thought, "What a stupid animal!"

Now the fly decided to land on the bull's (49) ... to make the bull notice him. He waited for the bull to say something, but the bull kept quiet.

The fly then shouted angrily, "Oh, Bull, if you find that I am too heavy for you, let me know and I'll fly away!"

The bull laughed and said, "Little fly, I don't care if you stay or leave. You are so (50) ... that your weight does not make any difference to me, so please be quiet and leave me alone."

48. A. flew
B. buzzed
C. whispered
D. sent into
E. came into
49. A. claw
B. hair
C. face
D. horns
E. feather

DOKUMEN NEGARA

SANGAT RAHASIA



20

Bahasa Inggris SMA/MA IPA

50. A. heavy
 B. wide
 C. large
 D. tiny
 E. thin