

DOKUMEN NEGARA

SANGAT RAHASIA



3

Bahasa Inggris SMA/MA IPA

Nama :

No Peserta :

Listening Section

In this section of the test, you will have the chance to show how well you understand spoken English. There are four parts to this section with special direction for each part.

PART I**Questions 1 to 4.****Directions:**

In this part of the test, you will hear some dialogues and questions spoken in English. The dialogues and the questions will be spoken twice. They will not be printed in your test book, so you must listen carefully to understand what the speakers are saying.

After you listen to the dialogue and the question about it, read the five possible answers, and decide which one would be the best answer to the question you have heard. Now listen to a sample question.

You will hear:

Man : I give up! I'll stop learning French.

Woman : Why do you say that? You are making a lot of progress.

Man : No, I'm not. I've tried hard but still I cannot speak it well.

Woman : How come? You can speak Arabic, Hindi, Japanese and even Russian well, can't you?

Narrator : What language is difficult for the man to learn?

- A. Hindi.
- B. Arabic.
- C. French.
- D. Russian.
- E. Japanese.

The best answer to this question is "French". Therefore you should choose answer (C).

1.
 - A. Job vacancy.
 - B. Job interview.
 - C. Printing company.
 - D. Getting high salary.
 - E. Finding a job.

2.
 - A. A novel.
 - B. A comic.
 - C. A magazine.
 - D. A science book.
 - E. An English Grammar Book.

DOKUMEN NEGARA

SANGAT RAHASIA

4

**Bahasa Inggris SMA/MA IPA**

3. A. The exam is easy.
 B. This time will not fly.
 C. The exam is in three weeks.
 D. He knows many things about the exam.
 E. He still has three days for the exam preparation.
4. A. She came to Nisa's party.
 B. She couldn't make a party.
 C. She had to go to a doctor.
 D. She invited the man to a party.
 E. She didn't go to Nisa's party.

PART II**Questions: 5 to 7.****Directions:**

In this part of the test, you will hear some incomplete dialogues spoken in English, followed by four responses, also spoken in English. The dialogues and the responses will be spoken twice. They will not be printed in your test book, so you must listen carefully to understand what the speakers are saying. You have to choose the best response to each question.

Now listen to a sample question.

Man : Hey, Cindy could you do me a favour?

Woman : What can I do for you?

Man : Would you mind going to the post office to send my letter?

Woman :

Narrator : What is the woman's possible response?

A. I am all out. Sorry.

B. I love to write letters.

C. Sure, by all means.

D. It's next to the police station.

Narrator : The best answer to the question is: "Sure, by all means." Therefore you should choose answer (C).

5. Mark your answer on your answer sheet.
6. Mark your answer on your answer sheet.
7. Mark your answer on your answer sheet.

DOKUMEN NEGARA

SANGAT RAHASIA



5

Bahasa Inggris SMA/MA IPA

PART III

Questions 8 to 11.

Directions:

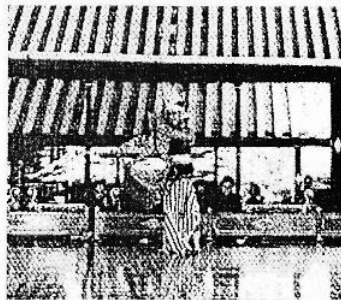
In this part of the test, you will hear some dialogues or monologues spoken in English. The dialogues or monologues will be spoken twice. They will not be printed in your test book, so you must listen carefully to understand what the speakers are saying. After you listen to the dialogue or monologue, look at the five pictures provided in your test book, and decide which would be the most suitable one with the dialogue or monologue you have heard.

8.

A.



B.



C.



D.



E.



9.

A.



B.



C.



D.



E.



DOKUMEN NEGARA

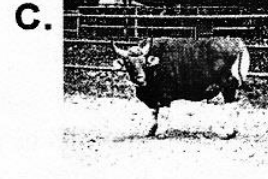
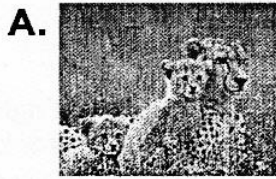
SANGAT RAHASIA

6

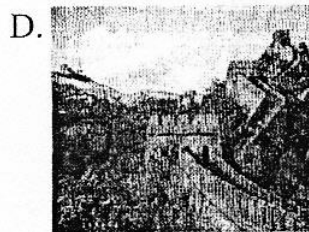
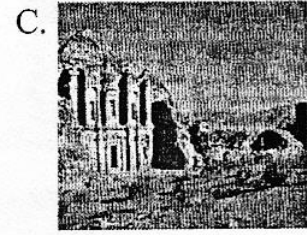
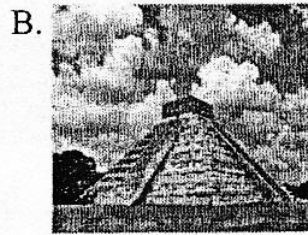
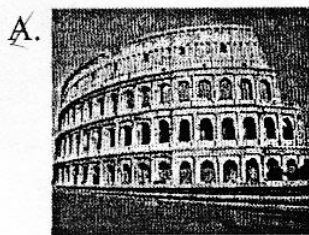


Bahasa Inggris SMA/MA IPA

10.



11.

**PART IV****Questions 12 to 15.****Directions:**

In this part of the test, you will hear several monologues. Each monologue will be spoken twice. They will not be printed in your test book, so you must listen carefully to understand what the speakers are saying.

After you hear the monologue and the question about it, read the five possible answers and decide which one would be the best answer to the question you have heard.

Questions 12 and 13 are based on the following monologue.

12. A. Paris.
B. The Louvre.
C. Notre Dame
D. The crowded city.
E. The City of Light.

DOKUMEN NEGARA

SANGAT RAHASIA



7

Bahasa Inggris SMA/MA IPA

13. A. The Louvre.
 B. The Cathedral.
 C. The Eiffel Tower.
 D. The lovely garden.
 E. The light structure.

Questions 14 and 15 are based on the following monologue.

14. A. Other beasts.
 B. The water.
 C. The frogs.
 D. A lake.
 E. A horse.
15. A. They ate an animal.
 B. They lived in a lake.
 C. They saw wild horses.
 D. They went somewhere.
 E. They jumped into water.

This is the end of the listening section

DOKUMEN NEGARA

SANGAT RAHASIA

8



Bahasa Inggris SMA/MA IPA

The following text is for questions 16 and 17.

September 21, 2012

Personnel Manager
Kettle, Kettle & Co
GPO BOX 345
Singapore 3333330

Dear Sir /Madam,

I am writing regarding your advertisement in Times on September 13, 2012. I have given careful consideration to the job description and believe that I have the necessary qualifications and personal attributes to take up the position.

Although I lack practical experience in the field of advertising, my past work experiences have shown that I'm able to learn quickly from experienced staff. In my previous job as a teacher, it was necessary to understand the difficulties of students and at the same time, to motivate them to strive for the best in their academic works.

I have enclosed my resume for your consideration with copies of my certificates and qualifications.

I would relish the opportunity to work as part of an enthusiastic office staff. I look forward to the opportunity for an interview.

Yours sincerely,

Low Chin

16. Low Chin's experience as a teacher was
- to motivate students in their academic works
 - to practice advertising experiences
 - to qualify her personal attributes to the position
 - to learn from the other teachers
 - to consider students' certificate qualifications
17. From the text, we know that the applicant
- established an advertising company
 - understood all advertising sectors
 - wanted to teach advertising class
 - considered all students' works
 - thought she could learn fast

DOKUMEN NEGARA

SANGAT RAHASIA

9

**Bahasa Inggris SMA/MA IPA****The following text is for questions 18 and 19****Hotel Work :
One Month Training Course**

Suitable young men and women are invited to apply for places on the one month training course on hotel work organized by the Hong Kong Institute of Hotel Management. Tuition is free of charge and students who successfully complete the course will be offered employment in the Colony's leading hotels.

The Training Course will take place from Monday 21st July to Friday 22nd August, from 9 a.m. to 4.30 p.m. daily, except Saturdays and Sundays.

Applications for places on the course are welcome for students now in their third year at secondary school, who have good knowledge of English, and have interest in hotel work.

Application forms may be obtained from:

The Hong Kong Institute of Management,
Box 948,
The South China Times.

The closing date for applications is April 29th

18. Those who successfully complete the course will be given
- A. free tuition
 - B. a further training course
 - C. jobs in big hotels in the colony
 - D. a chance to stay in the colony's leading hotels for one month
 - E. membership of the Hong Kong Institute of Hotel management
19. What requirement is needed by an applicant to apply for the hotel work training?
- A. Able to speak Mandarin.
 - B. Secondary school graduate.
 - C. Good knowledge of English.
 - D. Reputable university graduate.
 - E. 2-year experience in hotel work.



The following text is for questions 20 to 22.

Indonesia wins 2-0, but falls short of qualifying

Rizal Harahap

THE JAKARTA POST/PEKANBARU

Indonesia put in an impressive performance in their 2-0 defeat of Singapore, but still failed to qualify for next year's AFC U-22 soccer championship after finishing a third place at the end of Group E matches in Pekanbaru, Riau on Sunday.

The two goals for the home side, which welcomed Coach Aji Santoso back the sidelines from a four matches suspension, both came in the second half from Agung Supriyanto.

He scored his first goal from the penalty box before finding his second several minutes later. He beat a defender with a swift maneuver from the right flank and had the goalkeeper gasping as his thunderous goal blasted into the far post.

The young Indonesians collected 9 points, or just one point behind runner-up Australia, out of a six strong field of competitors. Japan topped the standing with a perfect collection 20-2 goal margin.

Singapore came in fourth with 7 points followed by Timor Leste with 3 points and Macau with no points.

In earlier matches in the day, favorite Japan continued their dominant form with a 5-0 drubbing of another tournament favorite Australia, while Timor Leste chalked up their first victory, a 4-1 over last-placed Macau.

20. Why did Indonesia fail to qualify for next year's AAFC U-22?
- They defeated Singapore.
 - They got disqualified.
 - They finished in the third place.
 - They did not have the chance.
 - They showed impressive performance.
21. How did Agung Supriyanto get his second goal?
- He let the goalkeeper keep the ball.
 - He beat a goalkeeper with a manoeuvre.
 - He welcomed Coach Aji Santoso back.
 - He kicked the ball from the penalty box.
 - He beat a defender with a swift manoeuvre.
22. What is the main idea of paragraph 1?
- Indonesia failed to qualify next year's AFC U-22 despite their winning over Singapore.
 - Indonesia and Singapore participated in the AFC U-22 in Pekanbaru, Riau.
 - Indonesia's impressive performance has trounced Singapore by 2-0.
 - Indonesia did not perform well but could defeat Singapore by 2-0.
 - Indonesia could defeat Singapore by 2-0.

DOKUMEN NEGARA

SANGAT RAHASIA

11

**Bahasa Inggris SMA/MA IPA****The following text is for questions 23 to 25**

An Alliance Could Answer The Growing Threat from Google and Facebook
By Evelyn M. Rulsi and Nick Bilton

Apple, which has stumbled in its efforts to get into social media, has talked with Twitter in recent months about making a strategic investment in it, according to people briefed on the matter.

Although apple has been hugely successful in selling phones and tablets, it has little traction in social networking, which has become a major engine of activity on the Web and on mobile devices. Social media are increasingly influencing the ways people spend their time and money – important consideration for Apple, which also sells application, games, music and movies.

Apple has considered an investment in the hundreds of millions of dollars, one that could value Twitter at more than \$10 billion, up from an \$8.4 billion valuation last year, these people said. They declined to be identified because the discussions were private.

There is no guarantee that the two companies, which are not in negotiations at the moment, will come to an agreement. But the earlier talks are a sign that they may form a stronger partnership amid intensifying competition from companies like Google and Facebook.

Apple has not made many friends in social media. Its relationship with Facebook, for example, has been strained since a deal to build Facebook featured into Ping, Apple's music-centric social network, fell apart. Facebook is also aligned with Microsoft, which owns a small stake in it. And Google, an Apple rival in the phone market, has been pushing its own social network, Google Plus.

23. What is the news about?
- A. Social networking.
 - B. Apple's new products.
 - C. Twitter strategic investment.
 - D. Twitters success in social media.
 - E. Apples's plan to cooperate with Twitter.
24. According to the news, Apple has not been very successful in ...
- A. selling phones
 - B. strategic investment
 - C. cooperating with Twitter
 - D. getting into social media
 - E. selling game applications
25. "But the earlier talks are sign that they may form a stronger partnership"
The underlined word means
- A. collusion
 - B. competition
 - C. agreement
 - D. negotiation
 - E. collaboration

DOKUMEN NEGARA

SANGAT RAHASIA

12

**Bahasa Inggris SMA/MA IPA**

The following text is for questions 26 to 28.

THE SCIENTIST HELP SHEEP DIES

Keith Campbell, a prominent biologist who worked on cloning Dolly the sheep, died at 58, the University of Nottingham said Thursday. Campbell, who had worked on animal improvement and cloning since 1999, died October 5, 2012, University spokesman Tim Utton said. He did not specify the cause, only saying that Campbell had worked at the university until his death.

He began researching animal cloning at the Roslin Institute near Edinburgh in 1991. In 1996 the experiments led to the birth of Dolly the sheep, the first mammal to be cloned from an adult cell.

The sheep was named after the voluptuous singer Dolly Parton. Researchers at the time said that the sheep was created from a mammary gland cell, and that Parton offered an excellent example.

The creation of the sheep captured the public imagination and instantly became a scientific sensation. The experiments drew not only admiration but also anger from some who raised questions about the ethics of cloning. Animal rights activists were outraged, while the church of England expressed reservations. Dolly was put down in 2003 after she developed a lung disease. Campbell's interest in cellular growth dated back to his college days studying microbiology in London.

26. Which of the following statements is TRUE according to the text?
- A. Campbell never felt leaving for the university.
 - B. Campbell stopped working because of his sickness.
 - C. Campbell focused his research dealing with humans.
 - D. Campbell started researching animal cloning as his experiments.
 - E. Campbell focused his research not only on the animal experiments.
27. Why did the experiments not draw admiration perfectly?
- A. Animal rights activists were outraged.
 - B. The public imagination became a scientific sensation.
 - C. Some people felt dissatisfied with the experiment results.
 - D. Some people were angry from their question about the ethics of cloning.
 - E. The experiments did not show the representative results of the cloning ethics.
28. Why was the sheep named after Dolly Parton?
- A. The researchers admired her.
 - B. She was a voluptuous singer.
 - C. She was a very popular singer.
 - D. The mammary gland cell was taken from her.
 - E. She was the one who inspired the researchers.

DOKUMEN NEGARA

SANGAT RAHASIA

13

**Bahasa Inggris SMA/MA IPA**

The following text is for questions 29 to 32.

Have we ever wondered how we get chocolate? Well this time we will enter the amazing world of chocolate so we can understand exactly how chocolate is made. Chocolate is taken from a tree called cacao tree. This tree grows in equatorial regions, especially in place such as South America, Africa, and Indonesia. The cacao tree produces a fruit about the size of a small pine apple. Inside the fruits are the tree's seeds. They are also known as coco beans.

Next, the beans are fermented for about a week, dried in the sun. After that, they are shipped to the chocolate maker. The chocolate makers work by roasting the beans to bring out the flavour. The beans from different places have different qualities and flavor. So they are often sorted and blended to produce a distinctive mix.

The next process is winnowing. The roasted beans are winnowed to remove the meat nib of the cacao bean from its shell. Then the nibs are blended. The blended nibs are grind to make liquid. The liquid is called chocolate liquour. It tastes bitter.

All seeds contain some amount of fat and cacao beans are not different. However, cacao beans are half fat. It is pure bitter chocolate.

29. What is the next step after the beans are fermented?
- A. The beans are blended to produce a distinctive mix.
 - B. The beans are roasted to bring out the flavor.
 - C. The cacaos are shipped to the chocolate maker.
 - D. The cacaos are sorted from different qualities.
 - E. The beans are dried in the sun.
30. The coco beans should be separated in processing because
- A. they can produce a distinctive mix
 - B. they have different qualities and flavor
 - C. they are from different places in the world
 - D. they came from South America and Indonesia
 - E. they are about the size of a small pine apple
31. It will be very delicious if a cup of chocolate liquor is added with ...
- A. dairy product
 - B. spring rolls
 - C. fruit juice
 - D. sweet stuff
 - E. warm water
32. "After that, they are shipped to the chocolate maker"
The underlined word has the closest meaning with
- A. purchased
 - B. refined
 - C. boarded
 - D. sailed
 - E. sent

DOKUMEN NEGARA

SANGAT RAHASIA

14

**Bahasa Inggris SMA/MA IPA****The following text is for questions 33 to 35**

Faster planes and cheaper flights are making it easier than ever before for people to travel. In the most 'developed' societies, visiting exotic places is a sought-after status symbol. The tourism industries of both developed and developing countries have recognised this fact and are learning to take advantage of it.

There are, however, some problems associated with this new industry. Firstly, there is the increasing crime rate. Some locals see tourists as an easy prey because, not only are they in unfamiliar territory and therefore less able to take care of themselves, but also they carry visible items of wealth, such as cameras and jewelery which can be disposed of quickly for profit.

Another major problem is health. With greater mobility comes greater danger of spreading contagious diseases around the world. One carrier returning home could easily start an epidemic before their illness was diagnosed. Moreover, the emergence of many diseases which resist antibiotics is causing scientists to be increasingly concerned about this issue.

Also to be considered is the natural environment, which can be seriously threatened by too many visitors. Australia's Great Barrier Reef, for example, is in danger of being destroyed by tourists and there are plans to restrict visitors to some of the more delicate coral cays

These are just three of the reasons why any country should be wary of committing itself to an extensive tourism development program.

33. Why does the natural environment become one of the serious problem associated with the faster planes and cheaper flight? Because
- it easily started an epidemic before their illness was diagnosed
 - it can be destroyed by too many visitors
 - the health problem will increase
 - they carry visible items of wealth
 - it can increase crime rate
34. Why is the crime rate increasing due to the new industry?
- Some tourists carry visible items of wealth.
 - The tourists are spreading contagious diseases.
 - The government is planning to restrict visitors to some coral cays.
 - The new industry makes the number of unemployment increase.
 - The tourists come by plane.
35. "One carrier returning home could easily start an epidemic before their illness was diagnosed." (Paragraph 3)
The underlined word means
- found
 - observed
 - identified
 - examined
 - healed

DOKUMEN NEGARA

SANGAT RAHASIA

15



Bahasa Inggris SMA/MA IPA

The following text is for questions 36 to 38.

Reading the three plots of Marry Higgins Clark in *All Through the Night* concern a stolen gold ornamental cup, a missing baby, and a will which seems to be deceitful. To solve the mystery, she revives her beloved characters; Alvirah, the former cleaning woman; and Willy Meeham, the plumber who won the lottery. They left their life in Jackson Heights, Queens, for an apartment on Central Park. The two have fun along the way solving the puzzle.

The pace is swift and the story is pure escape – totally fun Mary Higgins Clark. I admit, however, that I am still trying to know what melody of the song “*All Through the Night*” sounds like.

This holiday season, put aside your chores and curl up on couch with *All Through the Night*. When you close it you will be relaxed and more ready to enjoy the festivities. And then you might just want to tuck a copy into someone’s stocking or gift bag, as well.

36. What is the writer’s suggestion for the holiday season?
- A. Left your life for an apartment in Central Park.
 - B. Put aside your chores and read the novel.
 - C. Tuck a stocking into someone’s gift bag.
 - D. Stole a gold ornament and be deceitful.
 - E. Have fun and solve some puzzles.
37. What intrigues the writer about *All Through the Night*?
- A. It made her curl up on couch all day.
 - B. It made her ready for any festivities during holiday.
 - C. She didn’t know the melody of the song in the book.
 - D. She wanted to escape every time she read the book.
 - E. She closed it and got relax.
38. In the first paragraph, the reviewer
- A. introduces the Marry Higgins Clark
 - B. analyzes the three plots in the story
 - C. mainly discusses about Alvirah
 - D. is solving all of the mystery
 - E. summarizes the characters

DOKUMEN NEGARA

SANGAT RAHASIA

16

**Bahasa Inggris SMA/MA IPA**

The following text is for questions 39 to 41.

Should children be allowed to stay in at break times?

A group of children at Willow Tree School feel they should have the right to stay in at break times if they want to. There are a number of impracticalities regarding such a ridiculous idea but the foolish children appear not to have considered them.

Firstly, the children have to be supervised at all times and with children inside and outside this would not be possible. The budget for lunchtime stuff is already being stretched and there is certainly not enough money to employ extra staff just to satisfy these selfish children.

Some of the children are suggesting that the teachers could supervise them if they choose to be indoors at playtime. Are the teachers not working hard enough already? Do they not deserve 50 minutes to reflect on the morning? Do they not use the 50 minutes to prepare for the afternoon? Asking the teachers to supervise the children is beyond their job description.

Everybody knows that air is needed to help the brain at its best. In a recent study, Oxford University found that children's concentration tripled once they had been outside. If children were allowed to stay cooped up inside all day their concentration would suffer.

Of course some people might say it's unfair to make children go outside on a cold day. However, it has been proven that colds and illness spread in warm conditions. So, being outside is actually beneficial to their health. Plus they can run around and get some exercises outside.

Children need to go outside at break times. They need fresh air and exercise for their health. Teachers need a break to prepare, reflect and relax. However, the fundamental reason why children cannot stay in at break times is because there is just not enough money to provide supervision.

39. According to the writer, the most important thing to decide whether or not to let children stay in at break times is their
- security
 - supervision
 - concentration
 - condition
 - health
40. The fifth paragraph supports the view that
- even on a cold day, children should go outside at break times
 - students need fresh air to prevent from colds and illness
 - children should run around the school at break times
 - it's unfair to make children go outside on a cold day
 - colds and illness are tripled on a cold day
41. The result of a study conducted by Oxford University suggests that
- studying inside the class has consequences.
 - the brain works better in class than out of class
 - children study their best when they do it outside
 - by staying outside students get air for the brain
 - students lack concentration if they play during break times

DOKUMEN NEGARA

SANGAT RAHASIA

17

**Bahasa Inggris SMA/MA IPA**

The following text is for questions 42 to 44.

Many people imagine the sea-horse to be real horse living in the sea. This is not true at all. The sea - horse is so called because it is a tiny creature with a horse-like head which lives in the sea. Sea-horse are found mostly in warm seas.

They have a long, flexible tail which is used for wrapping around weeds for support. They swim upright position, their movements being helped by a rapidly oscillating fin on their back. The male sea-horse lays her eggs in this pouch.

The most remarkable thing about the sea-horse is that part of the process of reproduction is taken over by the male creature. Once the female sea-horse has laid her eggs in the male creature's pouch, she leaves. The hatching of the egg is done by the male fish. Mating begins with the male and the female sea-horses doing courtship dance. The male and female creatures swim around each other in circles.

At the end of the dance, the male appears to bow to its partner; but actually, the male is banding to pump water from his pouch. Next, the female fish lays eggs into the male's pouch. About two hundred eggs are laid. The pouch, then close up. The female sea-horse now swims away, leaving the male sea-horse to do hatching.

The eggs are hatched about a month later. The young sea-horses are ejected from the male creature's pouch by means of muscular contractions.

42. How does the sea-horse swing its fin?
- A. With its back.
 - B. With its position.
 - C. With its flexible tail.
 - D. With a slow manner.
 - E. With a fast movement.
43. What makes sea-horse remarkable?
- A. Its size.
 - B. Its reproduction process.
 - C. Its shape.
 - D. Its respiratory process.
 - E. Its rapid movement.
44. We know from the text that
- A. sea horse eat weeds for their food
 - B. the male sea-horse do the hatching
 - C. sea-horse is called because it is a tiny horse
 - D. the female sea-horse keeps her eggs in her pouch
 - E. the female sea-horse doesn't eat fish during pregnancy

DOKUMEN NEGARA

SANGAT RAHASIA

18



Bahasa Inggris SMA/MA IPA

The following text is for questions 45 and 46.

TENDER ANNOUNCEMENT	
Hess (Indonesia-Pangkah) limited a production sharing contractor of BP MIGAS, invites Goods and Service Providers to participate for the following retender:	
Title	Provision of rental drilling tool & equipment for Pangkah 2012-2014 development drilling program
Participant category	Big scale company
Group	Project
Activities section	General services
Sub section	Rental : drilling tools
Local content	≥30% (20% tkdn +max10% fund from BUMN bank)
Requirements for participations:	
Should you wish to participate, you may collect the pre-qualification document at the schedule given below:	
Date	: September 28-October 02, 2012
Time	: 09.00 – 15.00 WIB
Place	: Hess (Indonesia – Pangkah) Limited The Energy 11 th floor, SCBD lot 11a Jl. Jendral Sudirman Kav 52-53 Jakarta 12190
Jakarta, 28 September 2012 Hess (Indonesia - Pangkah) Limited Bid committee	

45. What must be done for the participants?
- Write a good proposal.
 - Develop drilling tools.
 - Invite the service company.
 - Provide drilling production.
 - Collect the pre-qualification documents.
46. What will the participant provide if they win the tender?
- Rent drilling equipment.
 - Equip the drilling program.
 - Collect the drilling document.
 - Collect the document schedule.
 - Share contract with BPMIGAS.

DOKUMEN NEGARA

SANGAT RAHASIA

19



Bahasa Inggris SMA/MA IPA

47. Arrange these sentences below into a good order.

Here is how to polish your shoes to shine.

1. Wipe off dust with a damp cloth. Place some polish on a rubbing instrument.
2. Apply polish in a small, circular movements to evenly cover each shoe.
3. When the polish is "gone", spray each shoe until it is covered with tiny water droplets and then polish dry.
4. Finally repeat Steps 2 through until you reach the level of shine you want or need.
5. Make sure that polish reaches the inside of the creases of each shoe (if they have any).
6. Let the polish "go off" on each shoe (preferably in the sun or near a warm heater) for 2 to 3 minutes.

- A. 1 - 2 - 6 - 5 - 3 - 4
- B. 1 - 2 - 3 - 4 - 5 - 6
- C. 1 - 2 - 3 - 5 - 4 - 6
- D. 1 - 2 - 5 - 3 - 6 - 4
- E. 1 - 2 - 5 - 6 - 3 - 4

Questions 48 to 50: complete the following text with the words provided.

Now she came to me and was reluctant to help me when I got in trouble. She would always calm me when I was angry; she would always come back helping me; she would always get me a glass of water when I (48) ... in nightmares; she would always cheer me up when I cried helpless; she would never let me carry (49) ... than I could hold. But why? Why did she do that? She would always comfort me when my parents fought.

"Honey, do you want a glass of water?" Anna asked me, pulling my bed-sheet (50) ... to my neck, with a glass of water in her right hand. I got up and saw her white face in the dim moonlight.

48. ...
- A. lifted up
 - B. picked up
 - C. brought up
 - D. woke up
 - E. stood up
49. ...
- A. opportunities
 - B. burden
 - C. chances
 - D. prospect
 - E. responsibility
50. ...
- A. close
 - B. deep
 - C. beyond
 - D. narrow
 - E. huge